



medemagroup

Service Manual Mini Crosser M¹



Serial number: ____-____-____-____

Delivery date: _____ Year 20____

This vehicle was supplied by:

Date: /

Table of contents

Table of contents	3
Introduction.....	4
Symbols.....	5
Warning!	5
Safe servicing	6
Tool list	7
Storage	8
Cleaning	8
Declaration of conformity	9
Maintenance.....	10
Service summary for Mini Crosser M Model.....	11
Troubleshooting	16
Programming unit.....	19
Programming via PC	20
Information about the vehicle via PC	22
Fuses and bulbs	27
Summary of battery connections.....	27
Sockets and control panel.....	28
Batteries	30
Battery disposal.....	30
Charging.....	31
Fitting an accelerator switch	33
Fitting a speedometer	35
Fitting corner speed reduction, 3W	37
Fitting corner speed reduction, 4W	38
Parent potentiometer	39
Fitting an hour counter	40
Fitting a parent key.....	41
Fitting a foot pedal	42
Fitting a twist grip accelerator, right & left.....	44
Fitting accessories on the C-rail.....	47
Replacing bulb in headlight.....	48
Fitting a side-view mirror.....	49
Electrical seat turning from right to left	50
Securing to vehicle floor with belts	51
Transporting by plane	54
Towing	54
Front wheel alignment, 4W	55
Technical data.....	56
Checklist for servicing M ¹ :	58

Introduction

This manual contains servicing instructions for the Mini Crosser M¹ Model mobility scooter.

The Service Manual is a supplement to our Spare Parts Catalogue and User Manual.

The Mini Crosser M¹ is designed for safe travel for at least 10 years, up to a max. of 5,000 hours, provided it is serviced and safety-checked every year, corresponding to 500 hours of operation. The service must be carried out either by Medema Danmark A/S or an authorised workshop.



IMPORTANT! For safety reasons it is of the utmost importance that the servicing and safety check intervals are complied with, as this minimises the risk of brake failure and short-circuits in the wiring, which could generate heat and cause a fire.

If help is required with troubleshooting, Medema Production is always happy to provide telephone assistance. If the problem seems to be an electrical fault that prevents the scooter from working, please tell us the error code. This can be found on the battery indicator on the control panel. Read more about this in the section on [Troubleshooting](#).

Please also have the scooter's serial number handy when contacting Medema Production A/S.

If you have any questions that are not answered directly by this manual, you are always welcome to contact us at:

Medema Production A/S
Tel: +45 7010 2054
Email: info@minicrosser.com
Internet: www.medema.com

NB: Errors and omissions excepted. Specifications subject to change.

Medema Production A/S also reserves the right to update the service manual in line with any modifications or improvements to the product.

Symbols



Used in the manual to indicate sections describing situations where extra care is required owing to the risk of personal injury.



Used to indicate sections on electromagnetic compatibility (EMC).

Warning!



For safety reasons the vehicle must not be lent to persons who are not completely familiar with it. The vehicle is designed for one person only.



The Mini Crosser M Model has been designed for users weighing max. 175 kg. Can be supplied in a HD version as standard for a max person weight of 250 kg.

Safe servicing

- To avoid injuries to both the service engineer and the subsequent user of the scooter, it is important to get to know the product before servicing it.
- Be particularly aware of the following:
- The Mini Crosser **MUST** be turned off at the main switch. If electrical components are being serviced, the positive terminal on the battery **MUST** also be disconnected.
- If the voltage needs to be measured in the course of troubleshooting, take great care not to short-circuit anything.
- Take great care not to short-circuit the battery terminals.
- Be careful not to lift heavy parts such as the seat, battery and motor gear incorrectly or drop them.
- Make sure to raise one rear wheel off the ground so that the scooter cannot drive off accidentally.
- Use professionally maintained tools.
- Where lock nuts are used, **NEW** ones **MUST** be fitted when the scooter is reassembled.
- Take care to fit new cable strips in the same way as the old ones. Make sure that no cables can be trapped by moving parts or stick out in such a way as to catch on things.
- End every service by making sure that the product is roadworthy:
 - Check that all the connectors are plugged in correctly.
 - Check that all the mechanical parts are properly secured.

Turn the scooter on and check

- that the magnetic brake clicks when the accelerator is activated.
- When the accelerator is released, it must not be possible to push the scooter.

Tool list

The following tools are needed to service the scooter:

- Circlip pliers
- Allen keys
- Box spanners, 7-17 mm
- Open-ended spanners, 7-17 mm
- Phillips and torx screwdrivers, 10/15/20/25 slot
- Needle-nose pliers
- Side-cutting pliers
- Plastic hammer
- Set of punches
- Retractable knife
- Steel brush
- Water pump pliers
- Wire strippers
- Crimping tool
- Pliers for Molex 5556/5558 crimps
- Riveting pliers
- Small cable ties
- Multimeter
- Battery tester
- Tyre pressure gauge
- Tyre pump with Schrader valve
- Acid-free oil and grease
- Loctite 406 / 603
- Cable ties
- PC
- PC Programming package for S180

Storage

The Mini Crosser is designed for use in all types of weather. The scooter should, however, be stored and charged under cover at temperatures in excess of 0°C. The charger must also be kept dry.

If the scooter is not going to be used for a long time, it is advisable to protect the tyres by chocking the scooter up. It is also a good idea to cover the scooter to protect it from dirt, dust and sunlight.

Cleaning

The Mini Crosser should be cleaned with a damp cloth. A little washing-up liquid can be used if necessary. The plastic covers can be polished with an ordinary glass cleaner or car wax.

Note!



Using a high-pressure cleaner or hose may damage the Mini Crosser's electronics.

CE Declaration of conformity

Medema Production A/S hereby declares that:

Machine: Mini Crosser

Use: (Prescribed use in
User Manual)

Model No: M¹

Complies with the Medical Device Directive 93/42/EEC

The product is made in accordance with the harmonized standard EN 12184 - Electrically powered wheelchairs, scooters and their chargers.

The product is risk analysed in accordance with the harmonized standard DS/EN ISO 14971:2007-04-10 2. edition - Medical devices - Application of risk management to medical devices.



Mini Crosser scooters can, for a fee, be taken to the nearest dealer for disposal in accordance with current environmental regulations.



Manufacturer: Medema Production A/S

Address: Enggårdvej 7, DK-7400 Herning

Tel./Fax +45 7010 2054 +45 9716 8582

Date: 12.04.2010

Signature: 22

Maintenance

Daily:

- Test the lights and indicators before using the scooter in the dark or poor visibility.

Every three months:

Test the brakes. With the disengagement lever up, it must not be possible to push the Mini Crosser.

- Test the brake disengagement function.
With the brake disengagement lever down, the scooter must not be able to go when the accelerator is activated. The battery indicator should flash error 9.
When the disengagement lever is up and the scooter has been switched off and on, the scooter should be able to go again. It must not be possible to push it.
- Test the accelerator.
With the scooter turned off, activate the accelerator while turning the scooter on. The scooter must not be able to go. The battery indicator should go up and down.
With the scooter turned on, press the accelerator forward a touch. When it is released, the scooter should stop completely and the brake should click. It must not be possible to push the scooter. Perform the same test again, but pressing the accelerator back.
- Lubricate the lever arm on the front brake hub with acid-free oil.
- Check the tyre pressure and tread.

Annual

Safety checks

The Mini Crosser M1 is designed for safe travel for at least 10 years, up to a max. of 5,000 hours, provided it is serviced and safety-checked every year, corresponding to 500 hours of operation. The service must be carried out either by Medema Danmark A/S or an authorised workshop.



IMPORTANT! For safety reasons it is of the utmost importance that the servicing and safety check intervals are complied with, as this minimises the risk of brake failure and short-circuits in the wiring, which could generate heat and cause a fire.

Service summary for Mini Crosser M Model

Area	Component	Check and remedy
Suspension and wheels	Rear suspension	<p>Check whether the rear of the scooter is drooping. The rear wheel must not rub on the mudguard with a load on the seat. Replace the shock absorbers/springs behind the batteries. See the Spare Parts Catalogue.</p> <p>Check the shock absorbers for oil leaks.</p> <p>Check that the swivel axle/transaxle is securely mounted. Retighten or fit bolts/nuts.</p>
	Check that no cables can be trapped by moving parts.	Fit cable ties.
	Check the wheels	Check the fastenings and the condition of the rims.
	Check the tyre pressure and tread.	<p>Recommended tyre pressure: 2.8 bar (50 psi)</p> <p>The minimum tread depth for good grip is approx. 1 mm.</p> <p>See the Spare Parts Catalogue for disassembly. NB! The rear and front wheels on the 4W MUST always be removed using the five bolts. NEVER undo the actual flange using the bolt in the centre. See the Spare Parts Catalogue. NB! ALWAYS let the air out of the inner tube before taking a wheel apart!</p>
	Check that the handbrake is working.	Lubricate the lever arm on the brake hub with acid-free oil. Adjust the cable length using the adjusting nipple. If parts are defective: See the Spare Parts Catalogue.
	3W: Front fork. Suspension and straightness.	<p>Check that the front fork can bounce. Is it crooked?</p> <p>Is there an oil leak?</p> <p>If there is a defect that needs to be repaired, replace the entire front fork. See the Spare Parts Catalogue.</p>
	3W: Front wheel.	Check the ball bearings for play and wear.
	4W: Front suspension.	<p>Check that the front wheels do not hit the underside of the front mudguards. Check that the rubber dampers are secure. They should just touch the axle beam. See the Spare Parts Catalogue.</p>
		Check that the T-suspension block is working and does not droop.

Area	Component	Check and remedy
Suspension and wheels (contd)	Front wheel suspension.	Check that the guide rods and balls are in good condition and properly tightened. Check the ball bearings in the front wheels and guide spindles for play/wear. Front wheel tracking. See the sketch for correct tracking if uneven tyre wear shows that adjustment is necessary.
Steering/Control panel	Lights, indicators, hazard warning and horn	Check functioning and the condition of the switches. If an indicator is not working: Check the connectors and the fuse in the control panel. Or change the bulb.
	Seals	Check that the rubber switch covers are intact and in good condition. Check that all the holes have plugs. Fit new ones if necessary. Check that the sign on the control panel is straight.
	Accelerator and handlebars	Check that the accelerator is mounted securely on the potentiometer shaft. Function test: Turn the scooter on while the accelerator is activated. The scooter must not be able to go. The battery indicator should go up and down. With the scooter turned on, press the accelerator forward a touch. When it is released, the scooter should stop completely and the brake should click. It must not be possible to push the scooter. Perform the same test again, but pressing the accelerator back.
	Max. speed potentiometer	Check that all the lamps come on when the batteries are fully charged. If there is no indication at all, try another controller, as the signal comes from there. If not, the card will have to be replaced. If a single lamp is not working, a diode is defective. Check that "True Charge calibration" is set to 99m ohm. This ensures the best indication of power consumption in hilly terrain.

Area	Component	Check and remedy
Motor / gear / brake (Transaxle)	Wear	<p>Check: That the motor runs smoothly and evenly. If not, the carbon brushes in the motor usually need to be replaced. The minimum length of the brushes is 1-1.5 cm. See the Spare Parts Catalogue for replacement.</p> <p>Check: The gear wheel in the transaxle for wear. Lift one rear wheel and measure the play around the periphery of the tyre. On a new machine the play is 16-18 mm. If the play is much bigger, replace the whole unit. See the Spare Parts Catalogue for replacement.</p> <p>Check: The rear wheel bearings in the gear for wear. Lift the rear of the scooter. Get hold of one wheel at a time. Lift it up and down to see if there is any play in the bearings in the transaxle. If there is, the whole unit should be replaced.</p>
	Power consumption	<p>Power consumption on a level road with a tyre pressure of 2.8 bar and 75-100 kg on the seat:</p> <p>10 km/h = 12 - 15 A 15 km/h = 17 - 20 A</p> <p>Measure on one of the battery cables using a clip-on ammeter.</p>
	Brakes and disengagement Check function	<p>When the disengagement lever is up: It must not be possible to push the scooter. It must be possible to drive normally when the scooter is turned on.</p> <p>When the disengagement lever is down: It must be possible to push the scooter. The scooter must not be able to go. Error 9 should appear when the accelerator is activated.</p> <p>The brake must be able to hold the scooter on a 15° (26%) slope with 75 - 100 kg on the seat. If not, it must be adjusted or replaced, depending on how much wear there is.</p>

Area	Component	Check and remedy
	Braking distance	<p>10 km/h - 2.0 m (9) 15 km/h - 3.5 m (9)</p> <p>The figures in brackets indicate the normal braking parameter when the scooter leaves the factory. It can be changed with the programming unit (forward deceleration). See below for more information. Please note that the braking distance must not be longer than specified in order to comply with official requirements.</p>
Steering column	Play/wear	<p>Check the following:</p> <ul style="list-style-type: none"> - Universal joint - Pins in steering shaft/front fork - That the aluminium bottom section of the steering column is firmly secured to the steering shaft. (*) <p>Wear/rust on the bearings in the steering column. Top support bearing. The bearings in the head tube are protected by seal rings. If the front fork is a bit stiff, the seal rings can be lubricated with a little grease.</p> <p>(*) On models with an 8 mm bolt going into the steering shaft from the aluminium bottom section of the steering column. The bolt can work loose if the steering column is twisted/knocked hard. This can be remedied by drilling a hole for a split pin between the steering shaft and the aluminium section. Contact Mini Crosser A/S.</p>
	Cables	Check that the cables cannot become trapped or be subjected to strain when the handlebars are turned or the steering column is folded down.
	Gas spring	<p>Check:</p> <p>That the gas spring locks the steering column securely.</p> <p>Check that there is no play in the release lever and the bolts/bushes securing the gas spring.</p>
	Key switch / charging socket	<p>Check that the key switch does not wobble.</p> <p>Clean with a damp cloth or compressed air if dirty. If the contacts are corroded, clean them with contact spray or replace the charging sockets.</p>
Chassis / seat / covers	Footplate	Check the plastic rivets securing the mat. Fit new ones if necessary.
	Seat post	Check that it is properly secured and in good condition.

Area	Component	Check and remedy
Chassis / seat / covers (contd)	Seat	<p>Check that: The release lever locks the seat properly.</p> <p>The seat is firmly secured on the seat frame/plate.</p> <p>The seat tube is in good condition. If necessary, lubricate the tube with a little acid-free grease.</p> <p>The armrests are in good condition.</p>
	Covers	<p>Check that the plastic covers are in good conditions. Parts with sharp or projecting edges should be replaced. The same applies to covers with an operational function, e.g. the splash guard and battery cover. (water in the controller)</p> <p>Cleaning: See the section on Cleaning.</p>
	Other mechanical components	Check that the other components work properly.
Electrical components	Control card	<p>Check that it is dry and in a good condition.</p> <p>Check that all the connectors are firmly in place.</p>
	Cables/plugs	<p>Check that the cables are firmly in place and not sticking out in such a way as to catch on something or get trapped.</p> <p>Check that the plugs are firmly in place.</p>
	Battery straps	Check that they are properly secured.
Batteries/charger (see also the section on Batteries)	Batteries	Check that there are no cracks in the batteries, that batteries look good and that the battery connections are firmly in place.
	Battery capacity	Check this with a battery tester. If it indicates that new batteries need to be fitted, take care to pair them with an accuracy of 0.1 V. Apply a little acid-free vaseline to the battery terminals before connecting them.
	Battery charger	<p>Check that the indicator lamp on the battery charger changes to CHARGING when the scooter is connected.</p> <p>If necessary, measure the charging voltage during charging. It should be approx. 28.8 V.</p> <p>Leave the scooter to charge overnight. Disconnect the charger and measure the battery voltage after about 15 minutes. It should be approx. 27.6 V for fresh batteries.</p> <p>Check that the scooter cannot go while the battery charger is connected.</p>

Troubleshooting

The following is a list of various problems that we are frequently asked about. Possible causes and solutions are given.

Problem	Possible causes	Solution
The Mini Crosser will not go. The battery indicator is not lit.	The key has not been turned to start. The batteries are completely flat. The control fuse has blown. The main fuse has burnt out.	Turn the key and wait 5 secs. before activating the accelerator. Charge the batteries. Change the fuse. Contact supplier.
The Mini Crosser will not go. There is a light in the battery indicator.	The Mini Crosser has been overloaded. The handbrake is on. There is a fault in the electronics. The batteries are flat. The charging plug has not been removed.	Wait approx. 1 min. before trying again. The vehicle must be turned off (See page 10, Driving the Mini Crosser) Release the handbrake. Contact supplier. Contact supplier. Remove the charging plug.
Driving speed is too low.	The speed selector is on slow. The electronics are overloaded. There is too little air in the tyres.	Change to a faster speed. Stop and wait a few minutes before starting. Pump the tyres up to the right pressure.
The driving distance per charge is too short.	There is a problem with the batteries. Low temperature. There is a problem with the charger. There is too little air in the tyres. The charging method is wrong.	Charge the batteries and check that the green lamps on the charger light up before driving off. Contact supplier. Pump the tyres up to the right pressure. Read the operating instructions.
The charging lamp on the charger does not light up when the charger is connected to the mains and Mini Crosser. (Read the operating instructions for the charger)	No power to the switch. Fault in cable. Fault in charger.	Turn the switch on. Contact supplier. Contact supplier.

Problem	Possible causes	Solution
The ready lamp on the charger does not light up even though the charger has been on for 10-12 hours. (Read the operating instructions for the charger)	There has been a power cut. The charger is doing a top-up charge. There is a problem with the batteries. There is a fault in the charging plug for the Mini Crosser	Reconnect the charger and repeat the charging process. Check again after half an hour. Contact supplier. Push the charging plug all the way in and repeat the charging process.
The ready lamp on the charger lights up even when partly discharged batteries are connected. (Read the operating instructions for the charger)	The fuse in the charger has blown. The switch in the charging plug is malfunctioning.	Contact supplier. Contact supplier.
The charging lamp indicates a fault: Read the operating instructions for the charger.	The charging plug has not been inserted or there is a mains fault. The battery voltage is too low for charging to start.	Push the charger plug in or contact the supplier. Contact supplier.

If the vehicle has an electronic fault, the battery indicator will show what sort of fault it is. It is a good idea to be able to say how many diodes/lamps light up when contacting the supplier.

Number of lamps	Electronic fault
1 lamp	The batteries must be charged or there is a poor battery connection. Check all connections between the controller and batteries. If these are in order, try charging the battery.
2 lamps	There is a poor connection to the motor. Check the connection between the motor and the controller.
3 lamps	There is a short circuit from the motor to a battery connection.
4 lamps	Not in use
5 lamps	Not in use
6 lamps	The S180 is prevented from driving. Inhibit 2 is active. This may be due to the battery charger being connected, the plug to the thermal switches being disconnected, a fault in the thermal switch or the scooter is overheating.
7 lamps	A potentiometer error has occurred. Ensure gas regulation is in neutral when the Mini Crosser is switched on.
8 lamps	A controller fault has occurred. Check that all connections are sound.
9 lamps	There is a poor connection in the magnetic brake. Check the magnetic brake and the motor connections. Check that the control connections are sound. The scooter is disengaged or the disengager terminal is affected.
10 lamps	There is excess voltage in the controls This is usually due to a poor battery connection. Check the battery connections. It may also be due to excessive regeneration with fully charged batteries.
Running lights	Charger is connected. Remove charger.

Programming unit

The Mini Crosser's running characteristics can be partially altered using a type SP1B programming unit via PC and the PC programming package for S180.

NB! SP1B cannot be used to change the speed, which can only be done using the PC program.

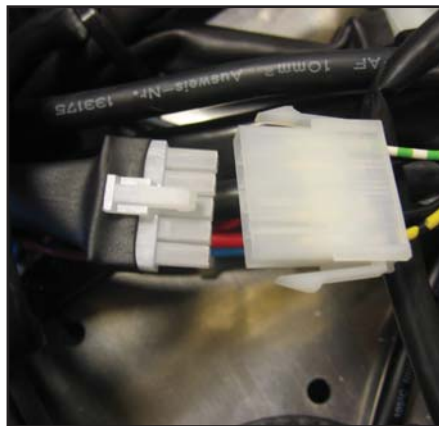
Please note that the speed, deceleration, throttle gain and motor compensation settings must not be increased. They have a major influence on user safety and the durability of the product.

If you have not received instruction in how to use the programming unit, we strongly advise against trying to make changes. The standard driving parameters for the various scooter models can be found on the next page.

The latest standard parameters can be found on our website at www.minicrosser.dk

Programming via PC

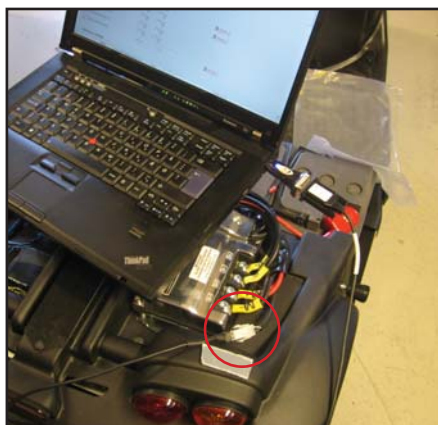
There are two different versions of the PC program, an OEM version and a dealer version. The OEM version gives complete access to all settings parameters. The dealer version gives limited access.



Before programming can commence, the five-pin plug connecting the S-180 to the thermal switches in the transaxle must be removed.



6 lights will flash in the scooter battery indicator.



Note that the programming connection in the red circle is led out of the S-180 controller via a short cable with a 4-pin Molex connector on the end.

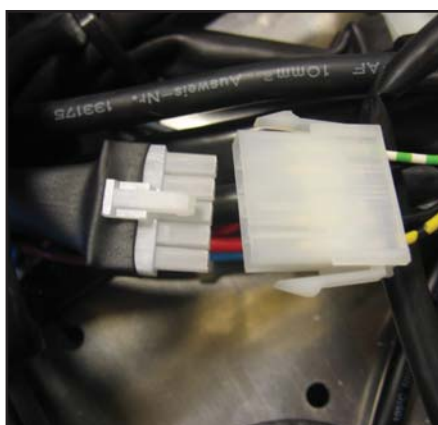
Connect the PC using the 4-pin Molex connector, PC cable and USB for serial adapter.

There is a complete package available containing PC program, cable and USB to serial adapter: SR-03030 PC PROGRAMMING PACKAGE FOR S-180

The package is the OEM version, and will not initially be sold to dealers. The product number of the dealer version will be available at a later date.

The product number of loose cable is SR-03028 PC PROGRAMMING CABLE S-180

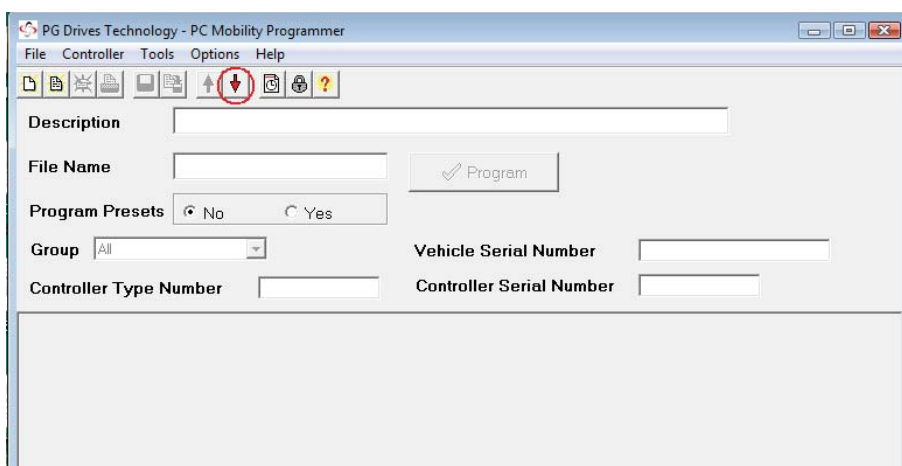
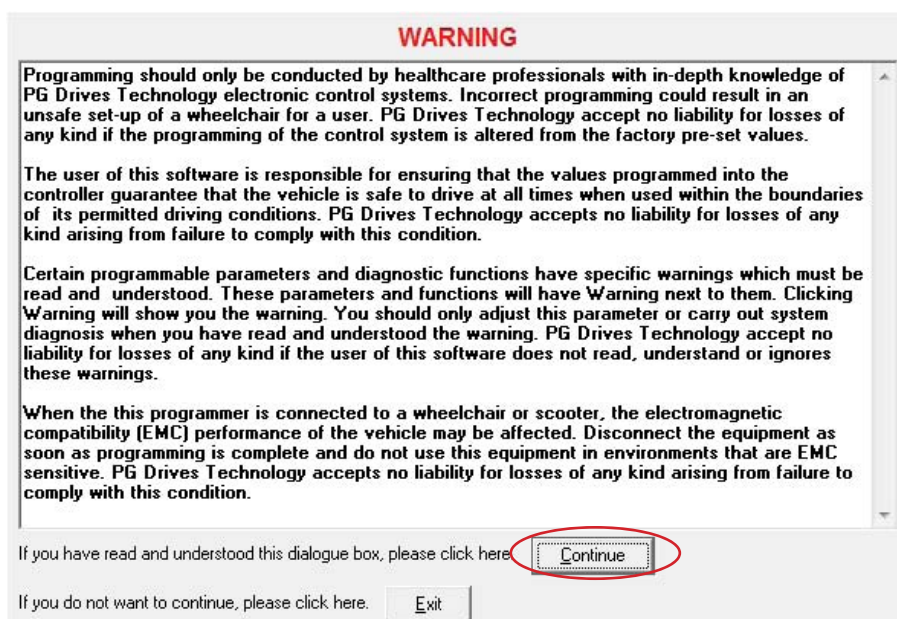
The product number of the USB serial adapter is SR-03029 USB FOR SERIAL ADAPTER



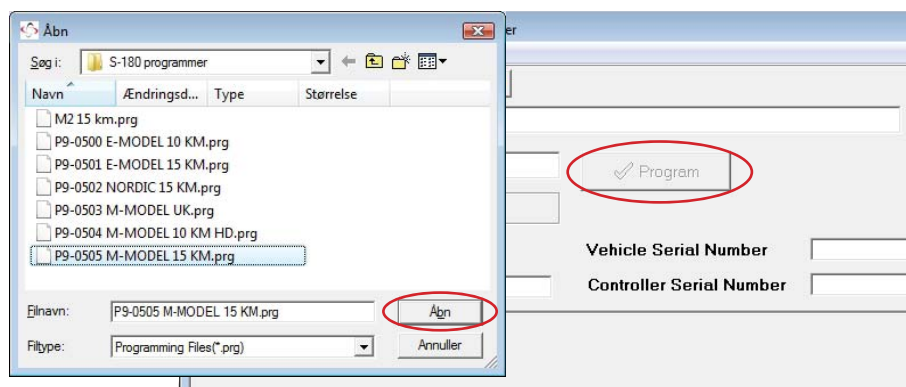
After programming, the scooter should be switched off with the key. After reassembling the 5-pin connector, the scooter can be switched on.

Information about the vehicle via PC

Double-clicking on the S-180 program icon displays the following screen. Press Continue to continue.



The red down arrow shows that the program can see that the controller is connected. Press the red arrow to load the program from the controller.

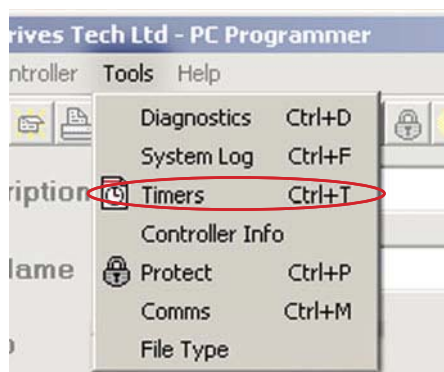


If you do not wish to load the file from the controller but instead a program in the PC, select “Files”, “Open”. Select the desired program, and press “Open”.

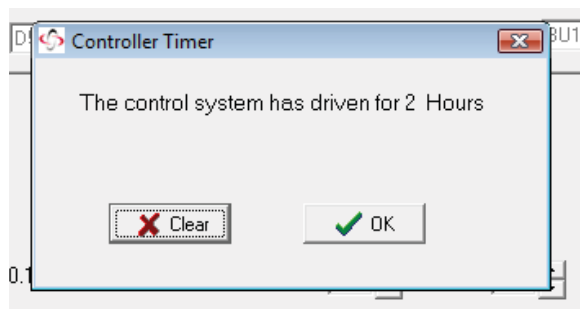
Having made changes to the program, use the “Program” button to return the program to the control box.

Timers

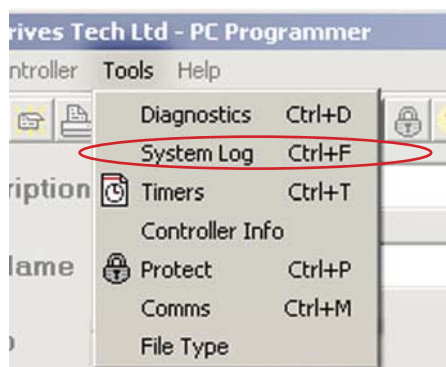
Information about how many hours the controls have been running. Select “Tools” – “Timers



The following message will be displayed.

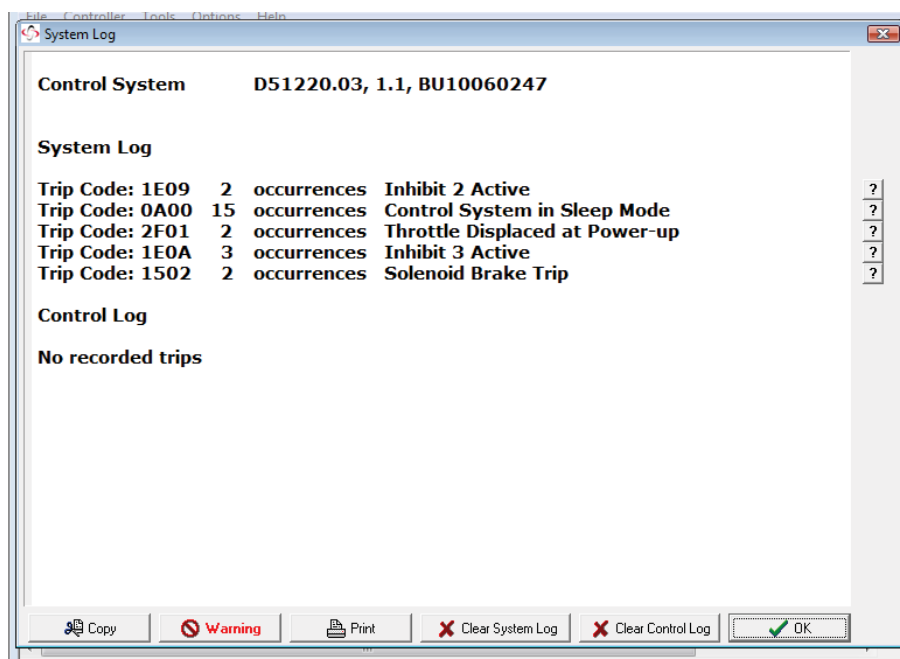


System log



The system log shows details about which controls are presently connected to the PC.

The log shows the last eight system errors registered. Every error has a Trip Code, and a short description of the error.



Descriptions of all the Trip Codes may be found "Help" – "Index".

The menus at the bottom of the screen enable you to:

“Copy” – copy the log to another file.

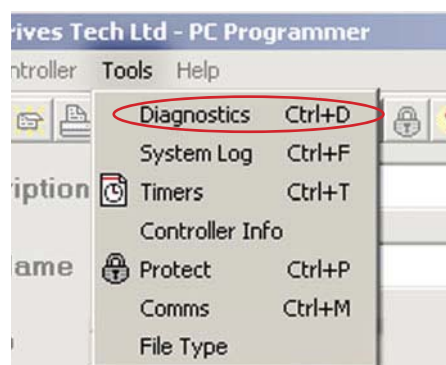
“Warning” – It is important to read and understand warnings before attempting to correct any errors.

“Print” – print out to a printer

“Clear System Log” – Delete the system log on the PC.

“Clear Control Log” – Delete the vehicle control log.

“OK” – Exit the system log and return to programming.

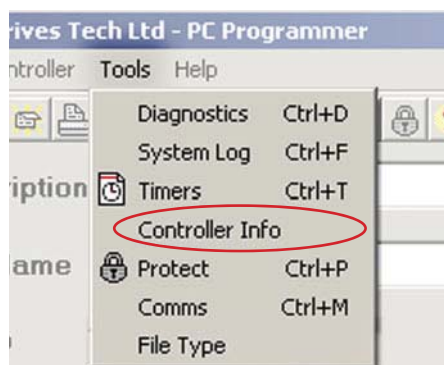
Diagnostics

If the controller connected is in trip condition, information about the Trip Code and a description may be found using “Diagnostics”.

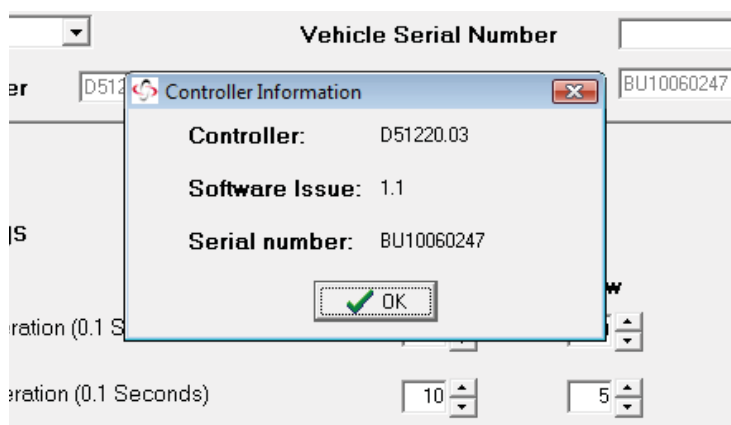


Example of trip condition.

The vehicle identity



Controller Info shows the controller's number, software version and serial number.



For additional information about the use of the PC program, refer to the online manual from PG Drives Technology. This may be found on the CD-ROM from which the program was installed.

Fuses and bulbs

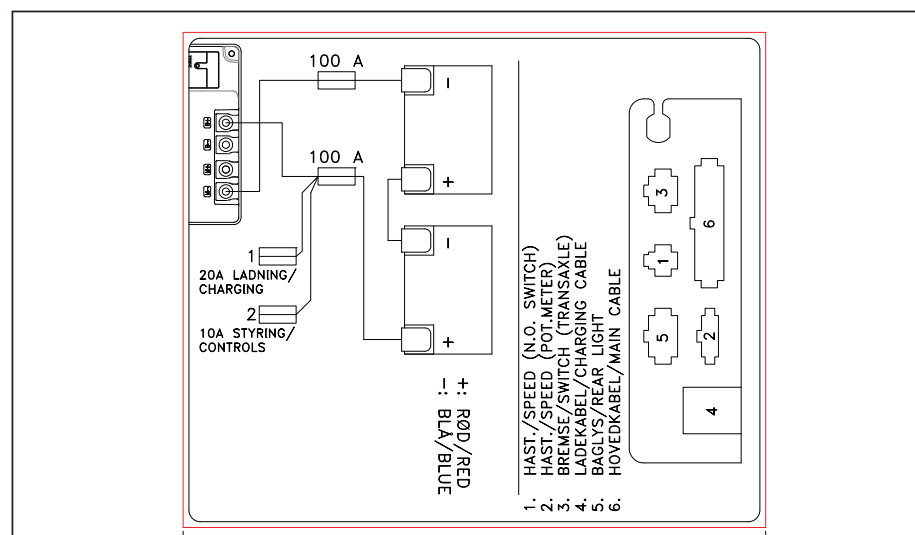
Fuse locations

Fuse 1	1 x 20 A fuse	Charging	Item No. SR-00066 (40 A)
Fuse 2	1 x 10 A fuse	Control system	Item No. SR-00066 (10 A)

Main fuses, 100 A, fuse type DIN 2581 - 100 A Item No. SR-00977

Summary of battery connections

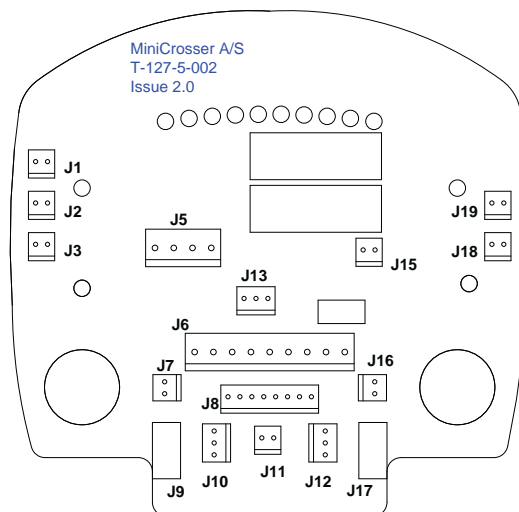
Fuses and extra sockets on card



Fuses on card in control panel. Use tweezers to replace.

F6 Horn - 5 A Littelfuse: 154 005.RA900

Sockets and control panel



Some of the sockets on the card are for optional extras. Some of them are connected at the factory and wired instead to the areas on the scooter where they are to be used.

The table on the next page, Open panel for access, shows when the control panel has to be opened.

The electric seat adjustment connection is not relevant in the case of electric seat adjustment for the S model. On the M¹ model the up/down switch is also under the armrest.

The below numbers refer to the socket on the printed circuit in the control panel.

1	Key switch
2	Reverse
3	Emergency stop
5	Headlight
6	Cable trunk
7	Hazard warning lights
8	Cable trunk
9	Indicator card R
10	Electric seat adjustment
11	Max. speed pot.
12	Corner speed reduction
13	Accelerator pot.
15	24 V horn
16	Light switch
17	Indicator card L
18	Parent key
19	Red. speed (N.O. switch)

Bulbs

Bulbs	
Headlight	BA15s 24 V/21 W MC Item No. SR-00066
Diode, indicator/stop light	24 V/2 W MC Item No. M-127-5-019
Diode, rear light	24 V/2 W MC Item No. M-127-5-015

Batteries

The battery indicator shows how much power is available to the scooter.

- Red, amber and green indicate that the batteries are fully charged.
- Red and amber indicate that the batteries will soon need recharging.
- Red indicates that the batteries need to be recharged as soon as possible, otherwise the scooter will cut out.

The Mini Crosser uses sealed, maintenance-free GEL batteries (Exide 12 V/56 Ah or AGM type 12 V/71 Ah). They do not normally generate gas and do not have to be topped up with water.

Only ever use a charger designed for charging dry maintenance-free batteries.

Max. charging current 12 A.

Battery disposal

Used batteries must be disposed of through your supplier or at a recycling centre.

Take care when handling any leaky batteries, as they contain corrosive acid.

INFO!

New batteries can be purchased from Medema Danmark A/S.

Charging

The battery manufacturer recommends charging the batteries at temperatures between +10° and +30°C in order to achieve the charging times specified in “Technical data”.

Charging takes around 60% longer at +5°C than at +20°C. This is because the battery finds it more difficult chemically to absorb the current.

It is advisable to charge the Mini Crosser in a heated room. If this is not possible every day, it should at least be done once a week.

Please note that the capacity of the batteries will reduce over time and at low temperatures. Battery capacity at -10°C is half that at +20°C.

New batteries do not reach full capacity until they have been charged and discharged about 20 times.

If the Mini Crosser is not going to be used for an extended period, charging once a month will suffice. The batteries must ALWAYS be fully charged when put into storage, as they cannot tolerate being left in a discharged state for lengthy periods.

Note!



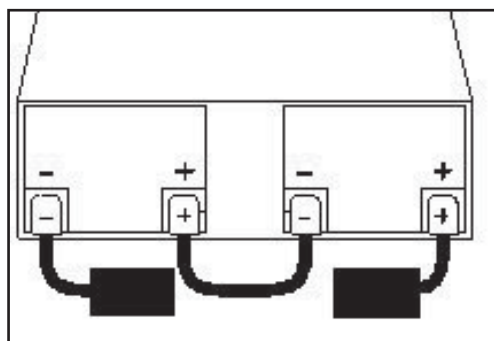
The charger must NOT be placed on the seat during charging.

The Mini Crosser should be charged while not in use. The charger supplied from the factory is of the automatic type and switches to trickle charging (very low power consumption) once the batteries are fully charged. The charger will flash until charging is complete. Then it will show a steady light.



The charger CANNOT overcharge the batteries! You can therefore leave the charger connected until the Mini Crosser is next used.

It is important to fit the batteries correctly. The battery terminals and snap locks are marked +/- . They must be fitted as shown in the sketch below. Make sure that the snap locks are properly closed. For the same reason there must not be any burrs on the terminals.

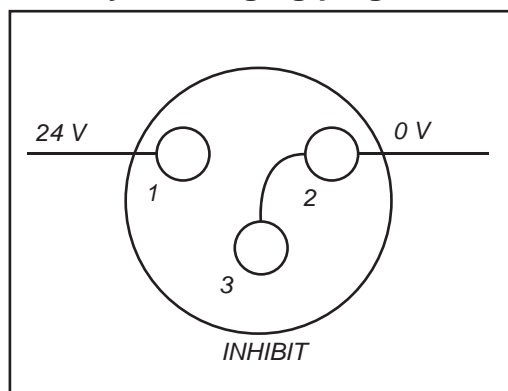


Please note that the Mini Crosser can be equipped with several types of charger (ask your dealer for information on the various types).

Never use charging devices other than those supplied from the factory without first contacting the dealer.

NEVER use chargers that are not designed for charging dry maintenance-free batteries.

Polarity of charging plug



NEUTRIK NC3MX charging plug seen from pin side.

Fitting an accelerator switch

Connecting two accelerators at the same time.

Options:

- Standard accelerator on left and right (wig-wag).
- Twist grip accelerator on right and left (single-ended).
- Twist grip accelerator and foot pedal (single-ended).

What they all have in common is a change-over switch for selecting which to use.

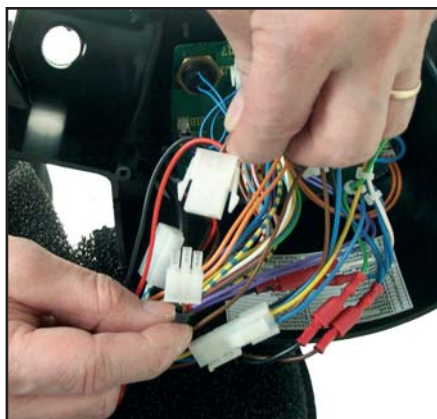
Fitting the change-over switch



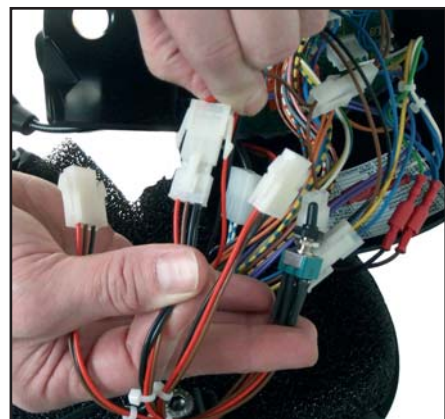
Drill a 6.8 mm hole as shown.



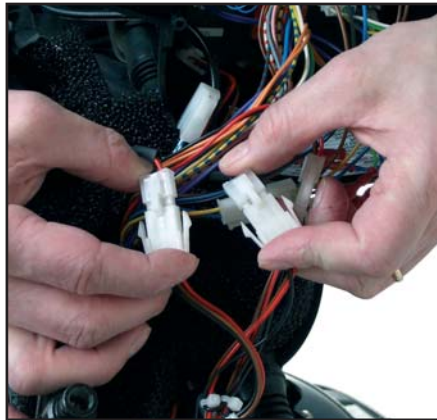
Remove the control panel.



Remove the standard accelerator.



Fit the male connector from the switch.



Fit the two accelerators.



Accelerator cable.



Fit the switch so it points to the right side.



Fit the control panel. Avoid trapping/stretching the wires.

Turn the scooter on and check that the magnetic brake clicks when the accelerator is activated.

When the accelerator is released, it must not be possible to push the scooter.

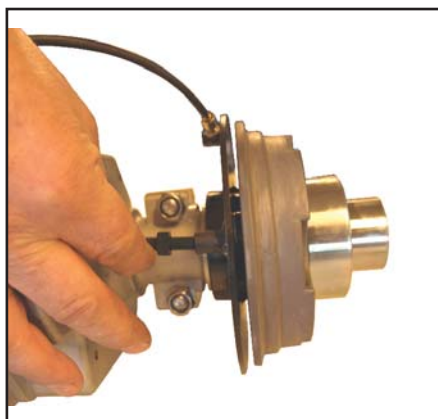
Fitting a speedometer



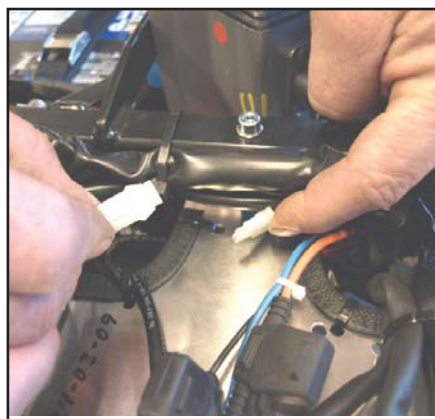
The kit contains these parts.



Take the seat and cover off, then remove the left rear wheel.



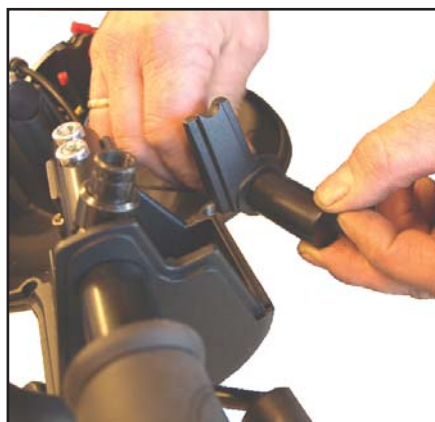
Screw the bolt in until it sticks 2-3 mm out through the backplate.



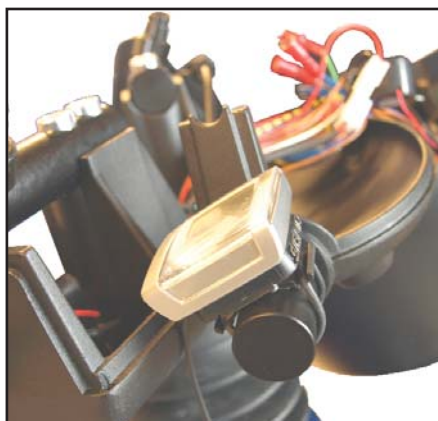
Plug the connector at the other end into the connector marked KM.



Remove the plug. Open the control panel.



Screw the holder for the speedometer on.



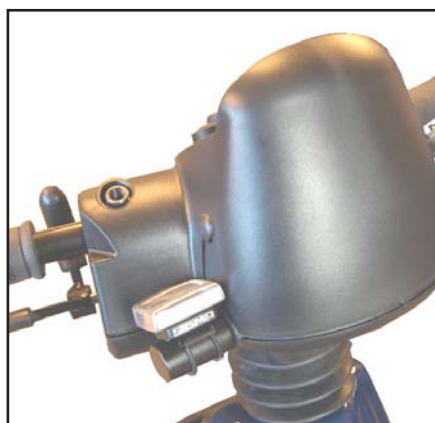
Fit the speedometer with the mounting strap provided.



Find the connector marked KM in the rubber bellows.



Plug the connector in and put the connector and cable back in under the rubber bellows.



The finished result.

Fitting corner speed reduction, 3W



The kit contains these parts.



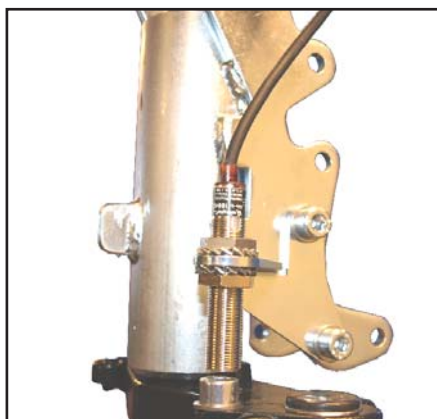
Take the plastic lever off the gas spring release.



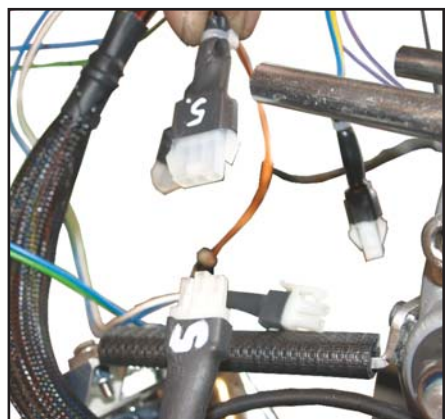
Remove the back plastic cover by undoing the six plastic bolts.



Take the front wheel off.

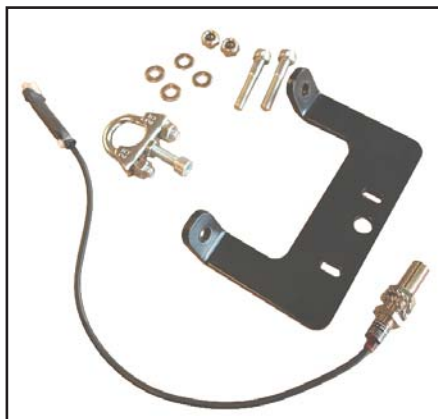


*Sensor mounted on head tube - 3W
Fit the sensor on the front fork.*



*Plug the sensor into connector no. 5.
Take care to secure the cables so that they cannot become trapped.*

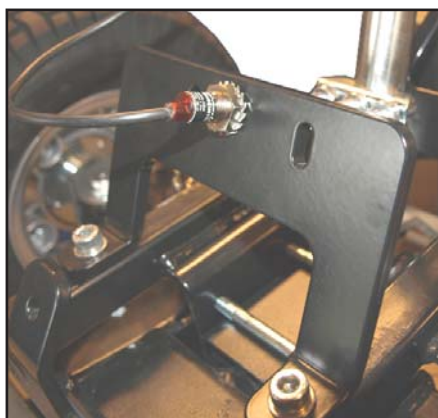
Fitting corner speed reduction, 4W



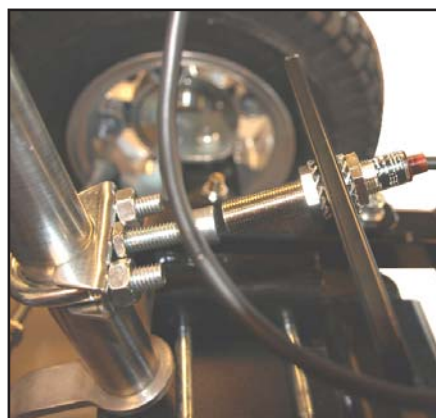
The kit contains these parts.



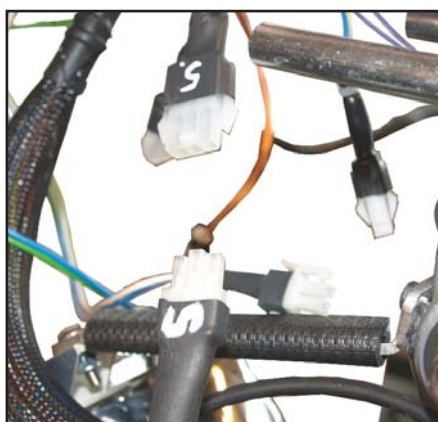
Take the front cover off.



Attach the bracket to the body frame using the pre-drilled holes.



Mount the U-shackle with pipe fitting and bolt on the steering column. Please note that the distance to the magnet should be approx. 3 mm.



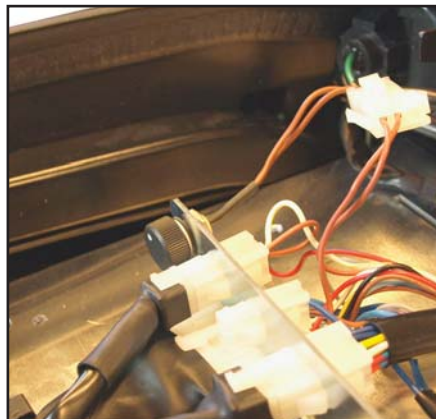
*Plug into connector no. 5.
Put the front cover back on.*

Turn the scooter on and check that the magnetic brake clicks when the accelerator is activated. When the accelerator is released, it must not be possible to push the scooter.

Parent potentiometer



Potentiometer with connector and jumper.



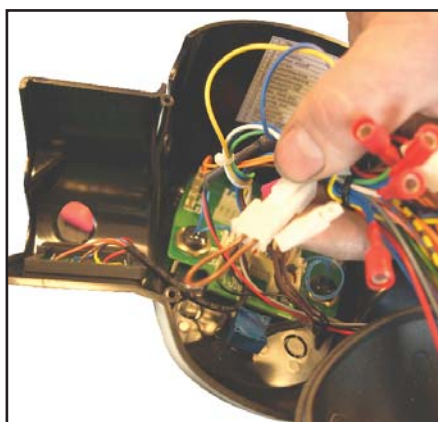
Remove the seat and cover. Fit the potentiometer.



Remove the speed control.



Fit the forward/reverse switch.



Fit the jumper on the connector for the forward/reverse switch. Put the control panel back on.

Turn the scooter on and check that the magnetic brake clicks when the accelerator is activated. When the accelerator is released, it must not be possible to push the scooter.

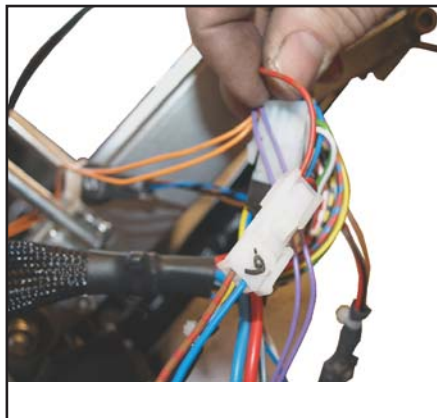
Fitting an hour counter



Take the plastic cover off the steering column.



Replace with a plastic cover that has an hour counter fitted.



Plug into connector no. 6. Fit the plastic cover. Take care not to trap any cables.



Panel with hour counter.

Turn the scooter on and check that the magnetic brake clicks when the accelerator is activated. When the accelerator is released, it must not be possible to push the scooter.

Fitting a parent key



Parent key.



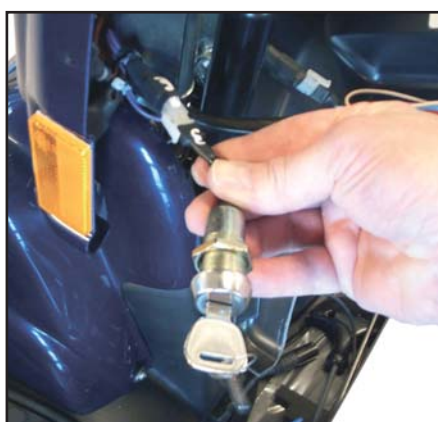
Remove the rubber plug in the plastic cover.



Remove the plastic lever.



Remove the back plastic cover by undoing the six plastic bolts.



Plug the key into connector no. 3.



*Put the plastic cover back on.
Turn the scooter on and check (see previous page).*

Fitting a foot pedal



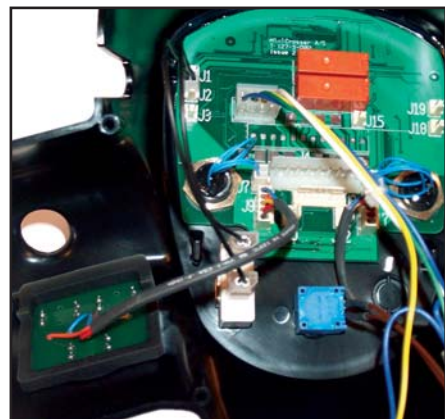
Complete foot pedal.



Open the control panel to connect the forward/reverse switch.



Cut a hole for the forward/reverse switch.



Plug the forward/reverse switch into contact no. 2.



The foot pedal can be located on the right- or left-hand side, or in the centre. Programming is changed to Single ended.



Forward/reverse switch mounted on the panel.



Foot pedal for forward and reverse. It can be located on the right- or left-hand side, or in the centre. Programming must be Wig Wag with this pedal.

After completing installation, turn the scooter on and check that the magnetic brake clicks when the accelerator is activated. When the accelerator is released, it must not be possible to push the scooter.

Fitting a twist grip accelerator, right & left



Left-hand twist grip accelerator kit.



Right-hand twist grip accelerator kit.



Take the plastic cover off.



Remove the rubber plug.



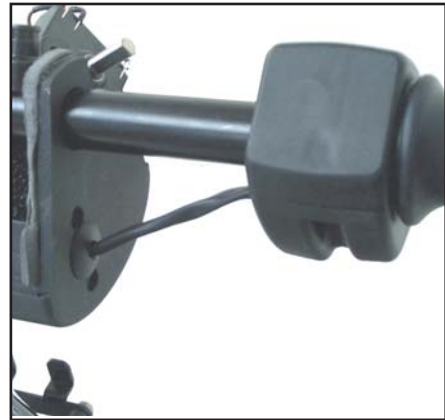
Remove the lever.



Remove the potentiometer.



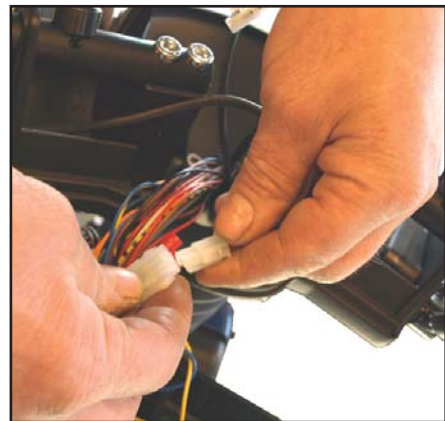
Fit the connector and plug in the hole.



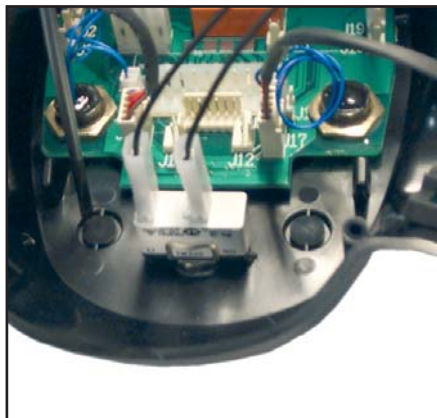
Fit the twist grip accelerator on the handlebars.



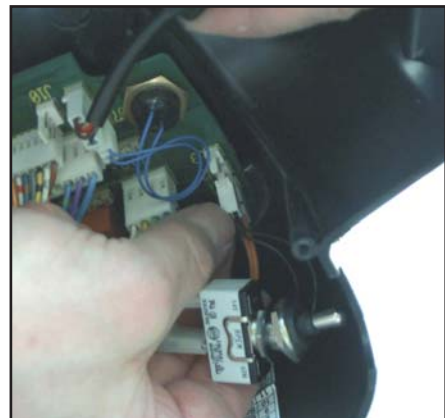
Tighten the screws.



Plug the twist grip accelerator into the 3-pin connector used for the standard potentiometer.



Fit the forward/reverse switch.



Plug into socket 2 on the card. Fit the small crimps in the socket so that the colours match.



Change programming to "Single-ended" via SP1, SP2 or PC. See separate description of programming.



Mount the switch and lable as shown above.

Turn the scooter on and check that the magnetic brake clicks when the accelerator is activated.

When the accelerator is released, it must not be possible to push the scooter.

To ensure that the handlebars are watertight, it is important to fit new plugs in the holes for the side-view mirrors. Use a couple of drops of quick-drying glue.

Fitting accessories on the C-rail

Examples



Knock the plug off one end.



Remove the strip.



Cut the strip to length. Fit the stick holder on the C-rail. Put the plug back in.



The holder for an oxygen cylinder can be fitted in the same way.



And a rollator holder.

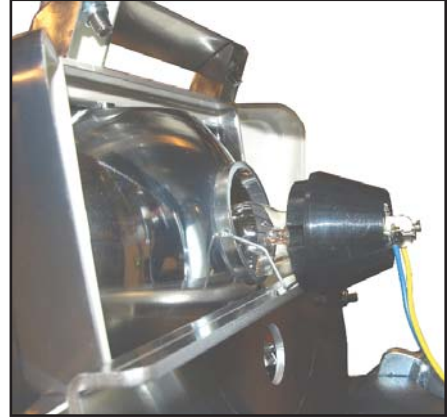


And a wheelchair holder.

Replacing bulb in headlight



The bulb in the headlight is held in place by a shackle.



Push the shackle down. The bulb and fitting can now be taken out and replaced.



On the 4W model the bulb can be undone and taken out for replacement without taking the cover off.



On the 3W model the front cover has to be taken off before the bulb can be changed.

Fitting a side-view mirror



Take the rubber plug out of the threaded bush on the handlebars. Twist the knob in the middle off.



Put the plug back in and press the rubber edge down around the bush.



The plug in place.



Fit the side-view mirror.

Electrical seat turning from right to left



Seat with electrical turning.



By default, electrical seat turning is installed so the seat turns to the right.



1. Lift the seat
2. Turn the seat 90° in the direction of the arrow.
3. Fasten the seat again.



The electrical seat turn will now turn to the left.

Securing to vehicle floor with belts

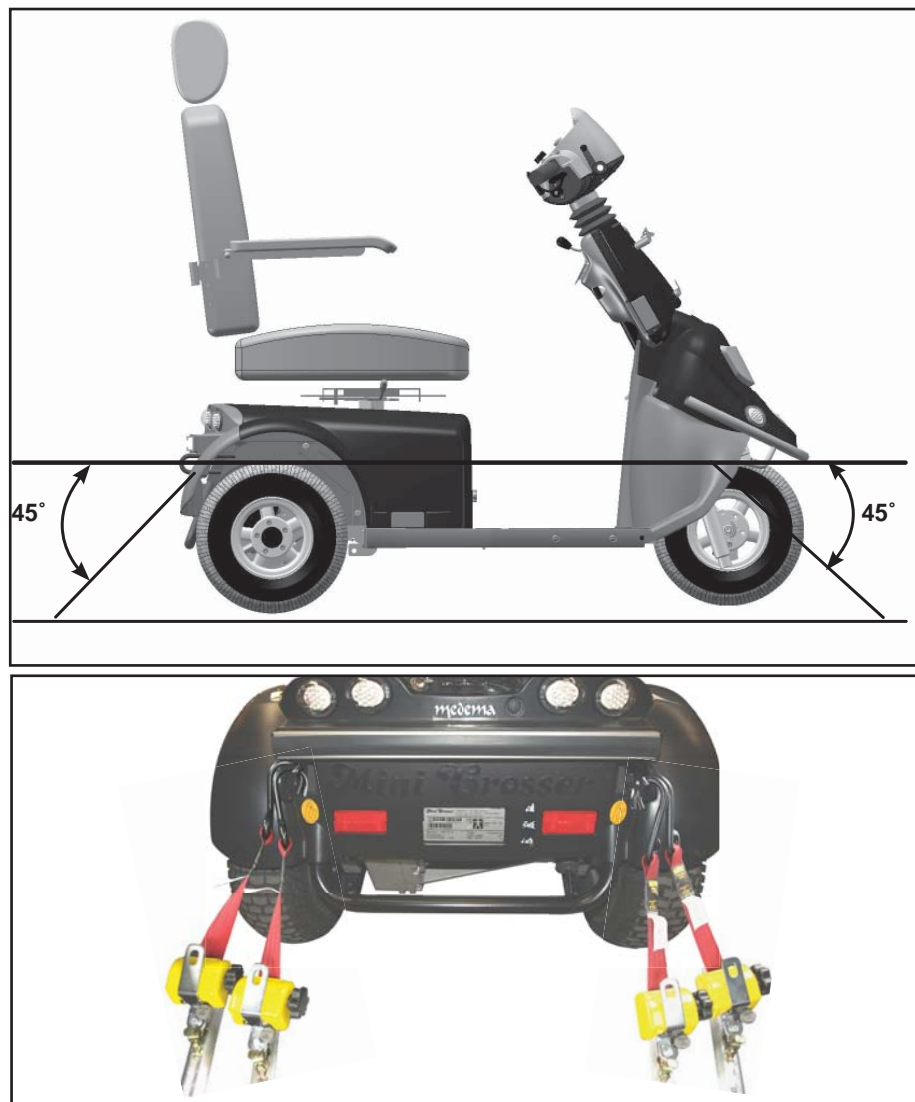
Q'Straint belt set for securing in motor vehicles. Item No. C2-0234

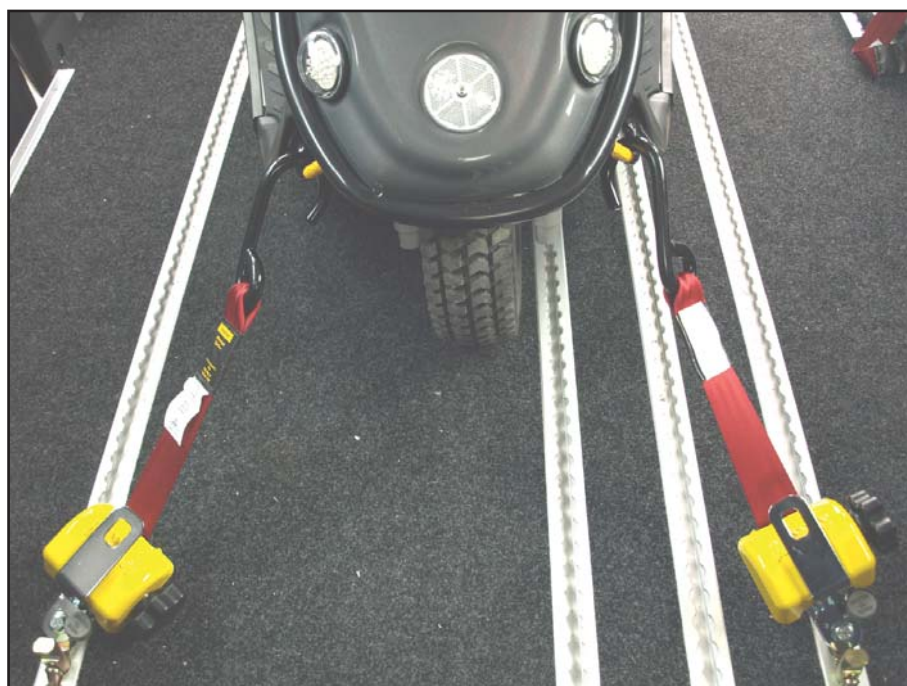
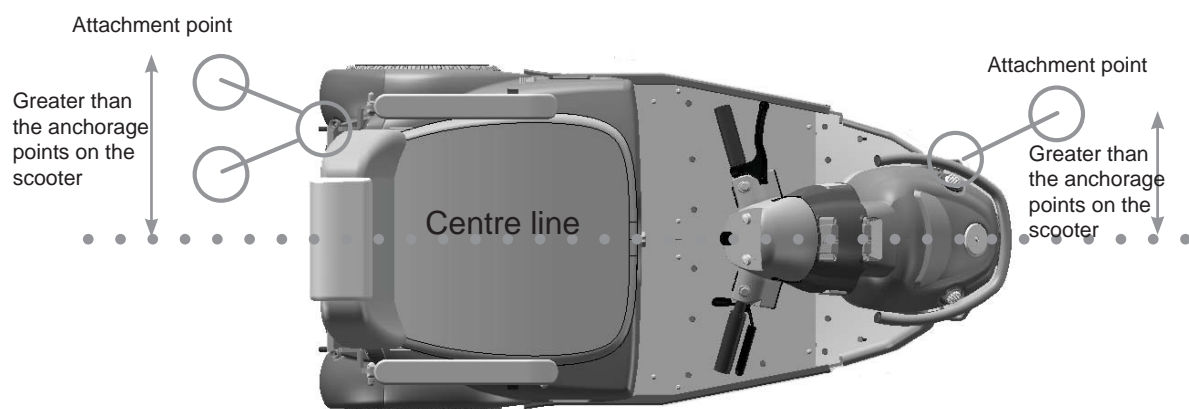
Dahl Engineering belt set for securing in motor vehicles. Item No. C2-0242

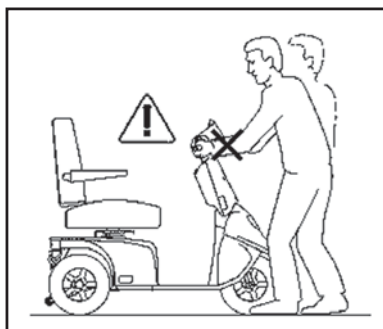
ALWAYS use four belts at the back and two at the front.

The belts must always be attached to approved fittings in the vehicle and the four eyes welded to the scooter.

The belts **MUST** be attached within the angles shown in the picture for optimum security.







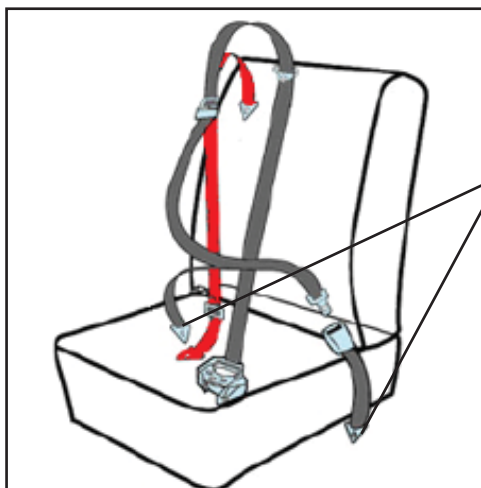
For transport in an estate car, the seat can be lifted off and the handlebars folded down. This reduces the maximum height to 68 cm.

The Mini Crosser can be used as a seat during transport in a van or bus, provided it is securely anchored to the vehicle with approved four-point belts attached to the restraint points provided on the Mini Crosser.

The Mini Crosser's restraint points have been tested and approved in accordance with ISO 7176-19.

The user must also always be independently restrained in the actual motor vehicle in accordance with traffic legislation rules.

Example



Restraining the passenger with a static 3-point seat belt:

Secure to the rearmost retractors.

The shoulder belt must rest against the collar bone and fall diagonally to the hip, where it is secured.

Tighten the belt by pulling on the loose strap. Undo it again by lifting the buckle. This is the same as on an aircraft.



Retractor with belt



Male and female parts of belt done up



Remember to turn the Mini Crosser off during transport. Turn the key to 0.

However, if at all possible, we recommend that the user occupies one of the seats in the motor vehicle. All other things being equal, this is safer.

Transporting by plane

If the Mini Crosser is to be transported by plane, the airlines require:

- the batteries to be flight-approved
- the air to be let out of the tyres
- the battery leads to be disconnected (not always, but frequently)

The seat and cover have to be removed to disconnect the battery leads.

A battery declaration for air travel can be found on the Mini Crosser website:

http://www.minicrosser.dk/Download_brochurer.asp

Towing

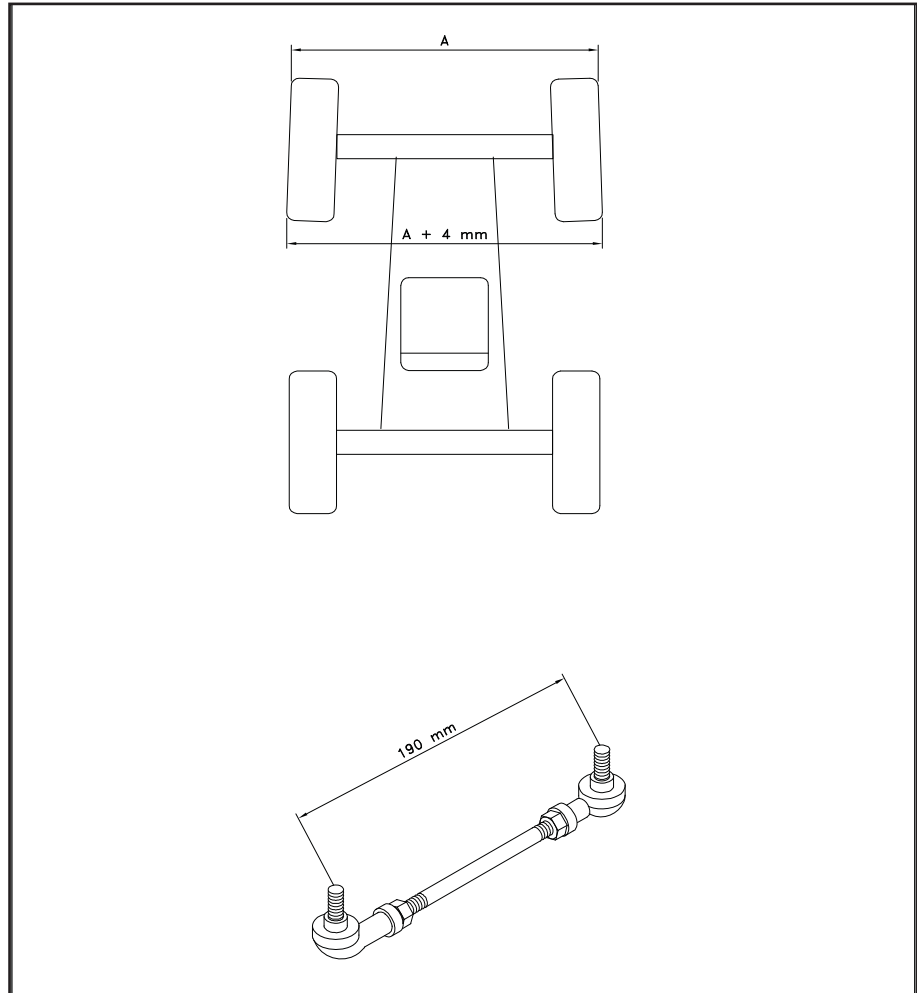
If you should be unfortunate enough to break down, the Mini Crosser can be towed or pushed. The Mini Crosser must always be turned off and the motor brake disengaged during towing. See the section on Brakes.



If the Mini Crosser is to be towed, secure a rope to the tow fitting on the front - marked with a yellow "hook mark". Do not tow faster than 5 km/h. The scooter will generate electricity when it is towed, with the motor acting as a dynamo. If it is towed at more than 5 km/h, there is a risk of the motor generating enough electricity to damage the scooter and, in the worst case, cause a fire.

The Mini Crosser will try to brake if it is towed at more than 5 km/h.

Front wheel alignment, 4W



Front wheel alignment (toe-in), 4W

Technical data

	M ¹ 3W	M ¹ 4W
General information:		
Transport height without seat (Steering column folded down)	69 cm	69 cm
Total length:	134 cm	140 cm
Total length incl. anti-tilt wheel:	143 cm	148,5 cm
Total width:	68 cm	68 cm
Total weight incl. batteries and Ergo Std seat.	151 kg	168 kg
Weight without seat (Ergo Standard 45 cm).	130 kg	147 kg
Static stability in all directions	15° - 26%	15° - 26%
Dynamic stability in all directions at minimum speed	10° - 17%	10° - 17%
Climbing ability with person weighing 150 kg	17° - 29%	17° - 29%
Kerb climbing	12 cm	12 cm
Max. speed	15 km/h	15 km/h
Braking distance 10 km/h 15 km/h	2.0 metres 3.5 metres	2.0 metres 3.5 metres
Controller	S-180	S-180
kW transaxle	0,7 kW	0,7 kW
Turning radius	105 cm	141 cm
Max user weight - standard	175 kg	175 kg
Max user weight inc. accessories HD version.	-----	250 kg
Tyre dimensions (6 ply)	3.00-6 max. outside diameter 340 mm	3.00-6 max. outside diameter 340 mm
Tyre pressure	2.8 bar	2.8 bar
Classification, ISO	Class C	Class C
Seats:		
Effective seat width:		
Ergo Standard	40,45,50,55,60 cm	40,45,50,55,60 cm
Spinalus	40, 45, 50 cm	40, 45, 50 cm
Mando	48 cm	48 cm
HD (user weight max 250 kg)	-----	60, 65, 70 cm
Ergo child / junior	35, 37 cm	35, 37 cm
Effective seat depth:		
Ergo, Spinalus and HD seats	32-52 cm	32-52 cm
Mando	48 cm	48 cm
Ergo child / junior	20-30 and 25-40 cm	20-30 and 25-40 cm

	M ¹ 3W	M ¹ 4W
Height of backrest		
Ergo standrad / HD	48 cm	48 cm
Spinalus	56 cm	56 cm
Mando	53 cm	53 cm
Ergo child / junior	36-41 cm	36-41 cm
Height: front edge of seat to ground		
Ergo Standard with slide rail	64 - 74 cm	64 - 74 cm
Ergo Standard without slide rail	61 - 71 cm	61 - 71 cm
Mando seat with slide rail	64 - 74 cm	64 - 74 cm
Mando seat without slide rail	61 - 71 cm	61 - 61 cm
Height: footplate to front edge of seat		
Ergo Standard with slide rail	45 - 55 cm	45 - 55 cm
Ergo Standard without slide rail	41 - 51 cm	41 - 51 cm
Mando seat with slide rail	45 - 55 cm	45 - 55 cm
Mando seat without slide rail	41 - 51 cm	41 - 51 cm
Angle of backrest		
Ergo standard / HD (manual)	Approx. -5° to +20°	Approx. -5° to +20°
Ergo standard / HD (EL)	Approx. -5° to +30°	Approx. -5° to +30°
Spinalus	Approx. -5° to +20°	Approx. -5° to +20°
Mando	Approx. +5° to +30°	Approx. +5° to +30°
Ergo child / junior	Approx. -5° to +20°	Approx. -5° to +20°
Batteries:		
56 Ah batteries	Standard	Standard
Maximum driving distance with new batteries at +20° on flat, firm surface	40 km	35 km
75/80 Ah batteries	Option	Option
Maximum driving distance with new batteries at +20° on flat, firm surface	60 km	55 km
Optimum battery capacity is reached after approx. 20 charges / discharges.		
110/115 Ah batteries	Option	Option
Maximum driving distance with new batteries at +20° on flat, firm surface	80 km	75 km
Optimum battery capacity is reached after approx. 20 charges / discharges.		
Battery type:		
Standard:	2 x 12 V / 56 Ah	2 x 12 V / 56 Ah
Option:	2 x 12 V / 75 Ah	2 x 12 V / 75 Ah
Option:	2 x 12 V / 110 Ah	2 x 12 V / 110 Ah
Max. battery dimensions in cm.	26.5 x 17 x 22 28.4 x 26.7 x 23	26.5 x 17 x 22 28.4 x 26.7 x 23
Battery weight, 2 batteries		
56 Ah	43 kg	43 kg
75/80 Ah	50 kg	50 kg
110/115 Ah	80 kg	80 kg

	M ¹ 3W	M ¹ 4W
Energy consumption in kWh, when charging from "empty"		
56 Ah	Approx. 1.5	Approx. 1.5
75/80 Ah	Approx. 1.5	Approx. 1.5
110/115 Ah	Approx. 3.0	Approx. 3.0
Charging device, 24 V DC		
56 Ah	6 - 10 A	6 - 10 A
75 Ah	6 - 10 A	6 - 10 A
110 Ah	10 - 12 A	10 - 12 A
Approx. charging time at 20° C	8 hours	8 hours
Lighting:		
Bulb, headlight	24 V - 21 W	24 V - 21 W
Diode, rear light	24 V - 2 W	24 V - 2 W
Diode, indicator	24 V - 2 W	24 V - 2 W
Standard colour	Grey - metallic	Grey - metallic

Checklist for servicing M¹:

Mini Crosser M1 - 3W and 4W	Date performed	Sign.
Area:		
Suspension and wheels		
Rear suspension		
No cables caught in moving parts		
Wheels – tightening and wheel rims		
Tyre pressure and tyre thread		
Functioning of hand brake		
3W – Front fork – suspension and alignment		
3W – Front wheels		
4W – Front suspension		
Front wheel mounts		
Controls – control unit		
Lights, blinkers, emergency stop lights and horn		
Seals		
Gas regulation and control lever		
Max speed potentiometer		
Motor / gears / brake (transaxle)		
Wear and tear		
Power consumption		
Brakes and freewheel function		
Braking distance		

Mini Crosser M1 - 3W and 4W	Date performed	Sign.
Brush length		
Transaxle – oil leaks/noise		
Steering column		
Play/wear		
Cables		
Gas springs		
Keylock switch/charging plug		
Chassis / seat / covers		
Footplate		
Seat column		
Seat		
Windscreen		
Other mechanical components		
Electrical components		
Controls on electric panel		
Cables / plugs and sockets		
Battery straps		
Batteries/charger		
Batteries – pitting and battery terminals		
Battery capacity		
Battery charger		
Accessories		
The functioning of all accessories must be tested. Replace missing screws and handles. Replace defective parts.		

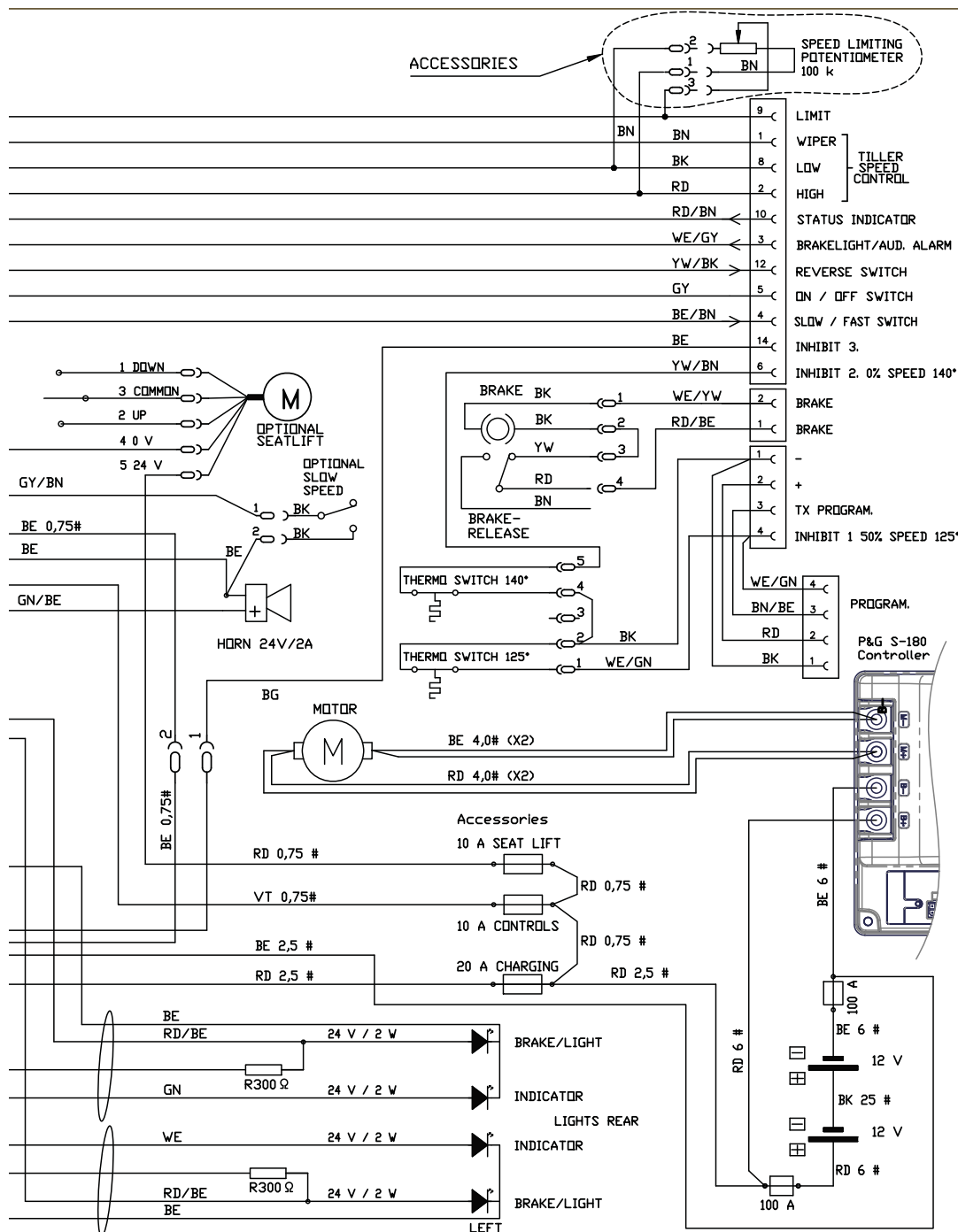
For more details about the above see the section entitled Service Review M¹ Mini Crosser model.

Test all functions in their inner and outer positions. Test drive the vehicle at its approved maximum load.

For reasons of safety, it is crucial to comply with the service and safety review intervals in order to minimise the risk of brake failure and short circuits in wiring, which may possibly result in overheating and fire.

Spørge

vis der er tvivl

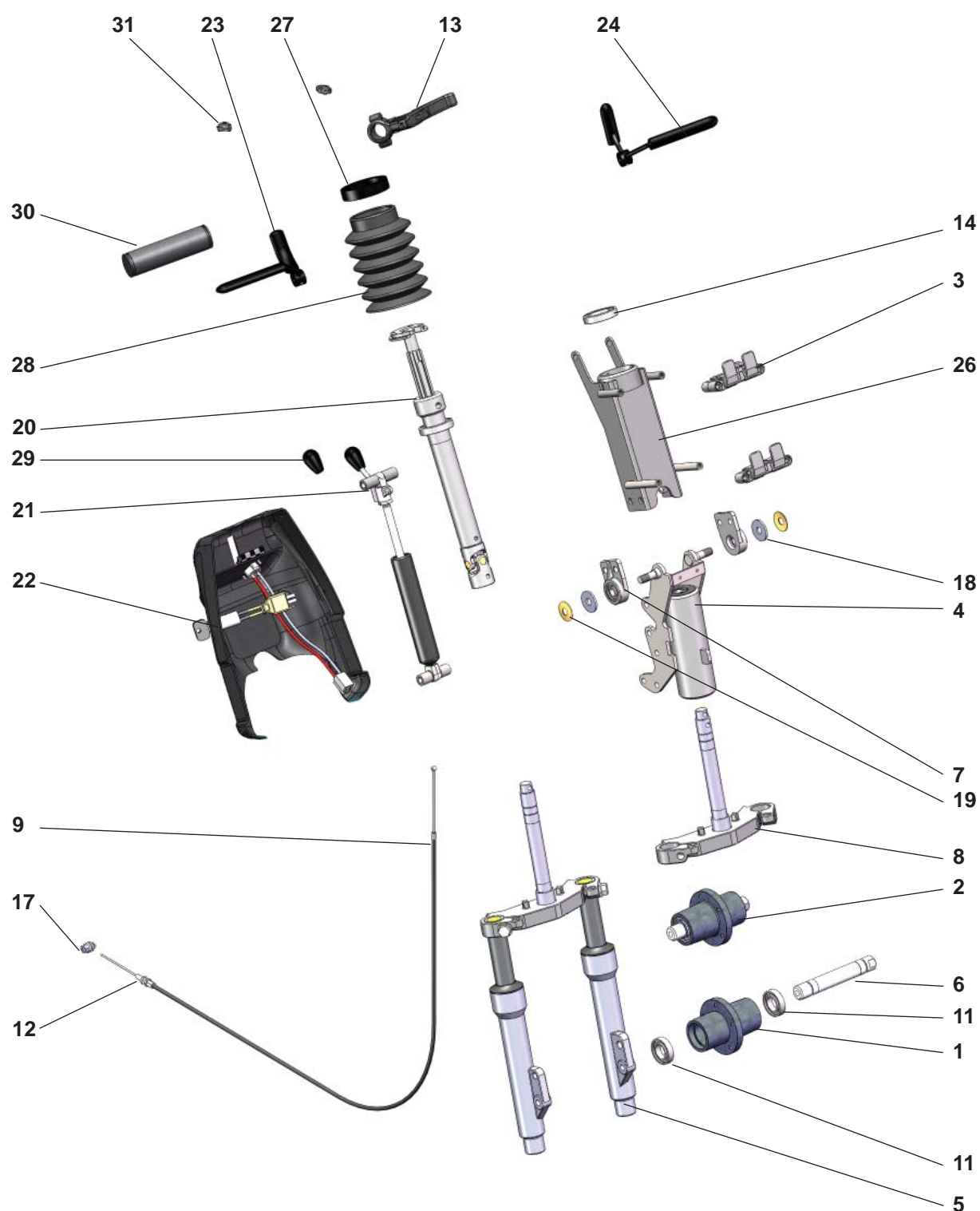


The information contained in this drawing is the property of Medema Production S/S Any reproduction in part or as a whole without the written confirmation of Medema A/S is prohibited

General tolerances	Geometrical toleran.	Welding tolerances	Min. general roughness: Ra ^{3,2} √	
ISO 2768-1-m	ISO 2768-2-K	EN/ISO 13920-AE	Material	
Medema Production A/S Kongsgaardvej 7 DK-7400 Herning t.: 70 10 17 55 f.: 70 16 85 82 e-mail: info@minicrosser.com www.minicrosser.com		Dimensions in mm	European projection	Scale:
Beskrivelse		Sign:		JOM
El-diagram MiniCROSSER M1 (PG S-180)		Date:		190810
Description		Dwg. no.		Issue
Circuit diagram MiniCROSSER M1 (PG S-180)		M-127-5-050		C

Mini Crosser M1-3W

Styrestolpe komplet Steering column complete



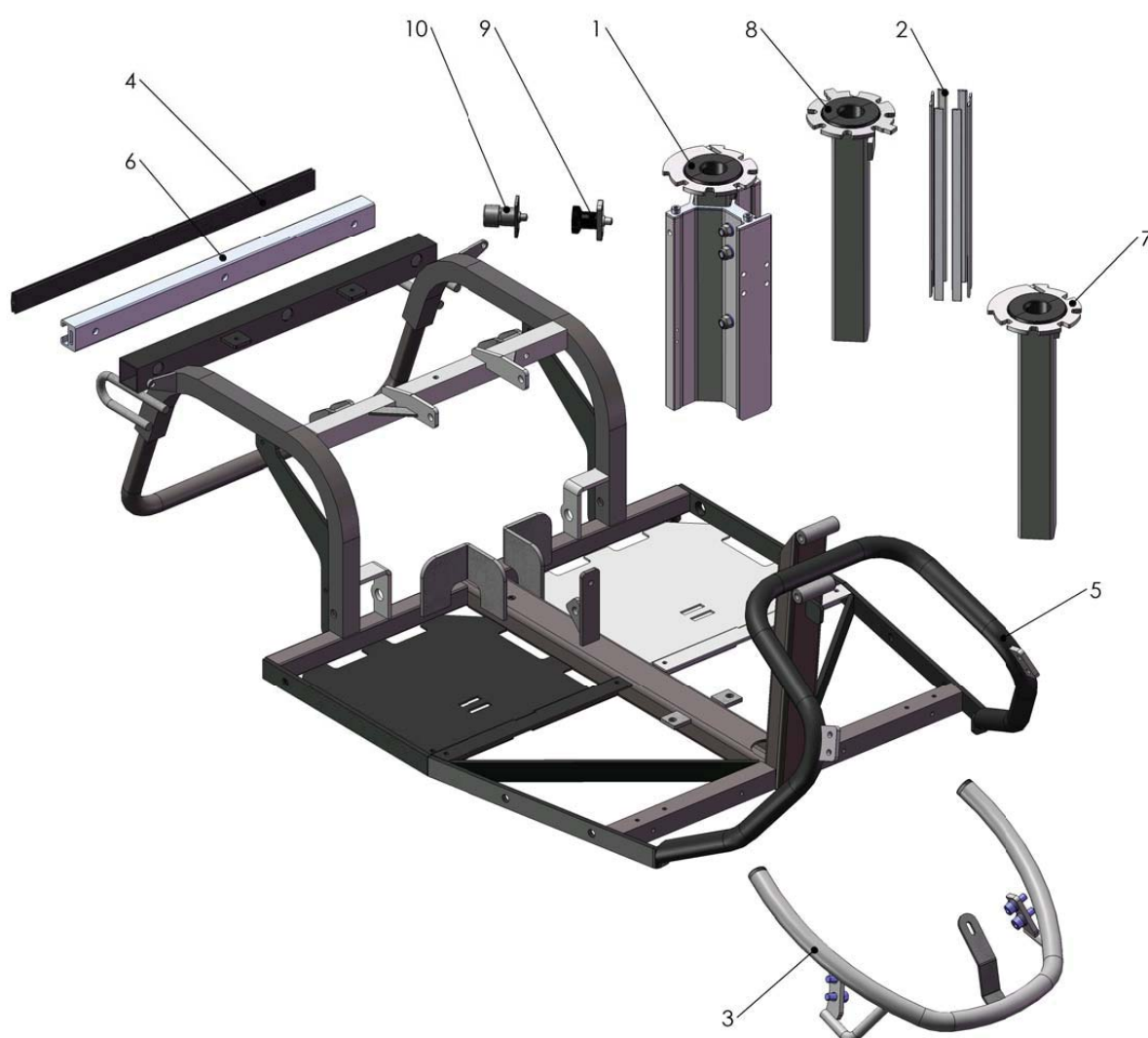
Mini Crosser M1-3W

Styrestolpe komplet Steering column complete

Pos.	Del/part no.	Benævnelse	Part name	Antal/ quant.
1	E-130-3-015	Nav forhjul udenbremsetromle 3W.	Hub frontwheel without breakdrum 3W	1
2	M-127-03-003	Forhjulsnæv, komplet	Front-wheel hub	1
3	M-127-03-025	Holder for kurv, komplet sæt	Holder for basket, complete set	1
4	M-127-03-011	Kronrør komplet	Head tube complete	1
5	M-127-3-004	Forgaffel 6" hjul	Front Fork 6" wheel	1
6	M-127-3-006	Aksel forhjul	Axle, front wheel	1
7	M-127-3-026	Beslag styrestolpe med leje, komplet	Bracket with bearing for the steering bar complete	2
8	M-127-3-027	Forgaffel styrakseldel	Fork steering axle	1
9	M-127-3-093	Bremsekabel 2100mm (3w/4w)	Brake cable 2100mm (3w/4w)	1
11	SR-00154	Kugleleje 61904-2RS	Ball Bearing 61904-2RS	1
12	SR-00851	Justerskrue for bremsekabel inkl. 2 møtiker	Adjusting screw for brake cable including 2 nuts	1
13	SR-01497	Håndbremsegreb	Brake hand lever	1
14	SR-04246	61906-2RS, leje	61906-2RS, Bearing	1
17	SR-04802	Kabel lås	Cable lock	1
18	SR-05193	Polyamid skive Ø10,5 x Ø30 x 2,5	Polyamid washer Ø10,5 x Ø30 x 2,5	2
19	SR-05194	10,2x28x0,8 Tallerkenfjederskive	10,2x28x0,8 Disc spring	2
20	T-127-02-014	Styrestolpe, kardanled, komplet	Steering Post, kardan part, complete	1
21	T-127-03-012	Gasfjeder for styrestolpe	Gasspring for steering column	1
22	T-127-03-017	Montering ladestik og tændingsnøgle	Mounting charger plug and key switch	1
23	T-127-03-099	Gashåndtag universal højre, komplet	Gashandle universal right, complete	1
24	T-127-03-100	Gashåndtag universal venstre, komplet	Gashandle universal left, complete	1
26	T-127-3-063	Styrstamme	Steering column	1
27	T-127-3-070	Ring for gummibælg	Ring for rubber bellow	1
28	T-127-3-071	Gummibælg	Rubber bellow	1
29	T-127-3-074	Knop	Handle	1
30	T-127-3-077	Styrhåndtag	Steering handle	1
31	T-127-3-081	Prop for spejlmonteringshul	Plug for mirror mounting hole	2

Mini Crosser M1-3W

Stel og sæderør.
Chassis frame and seat column.



Mini Crosser M1-3W

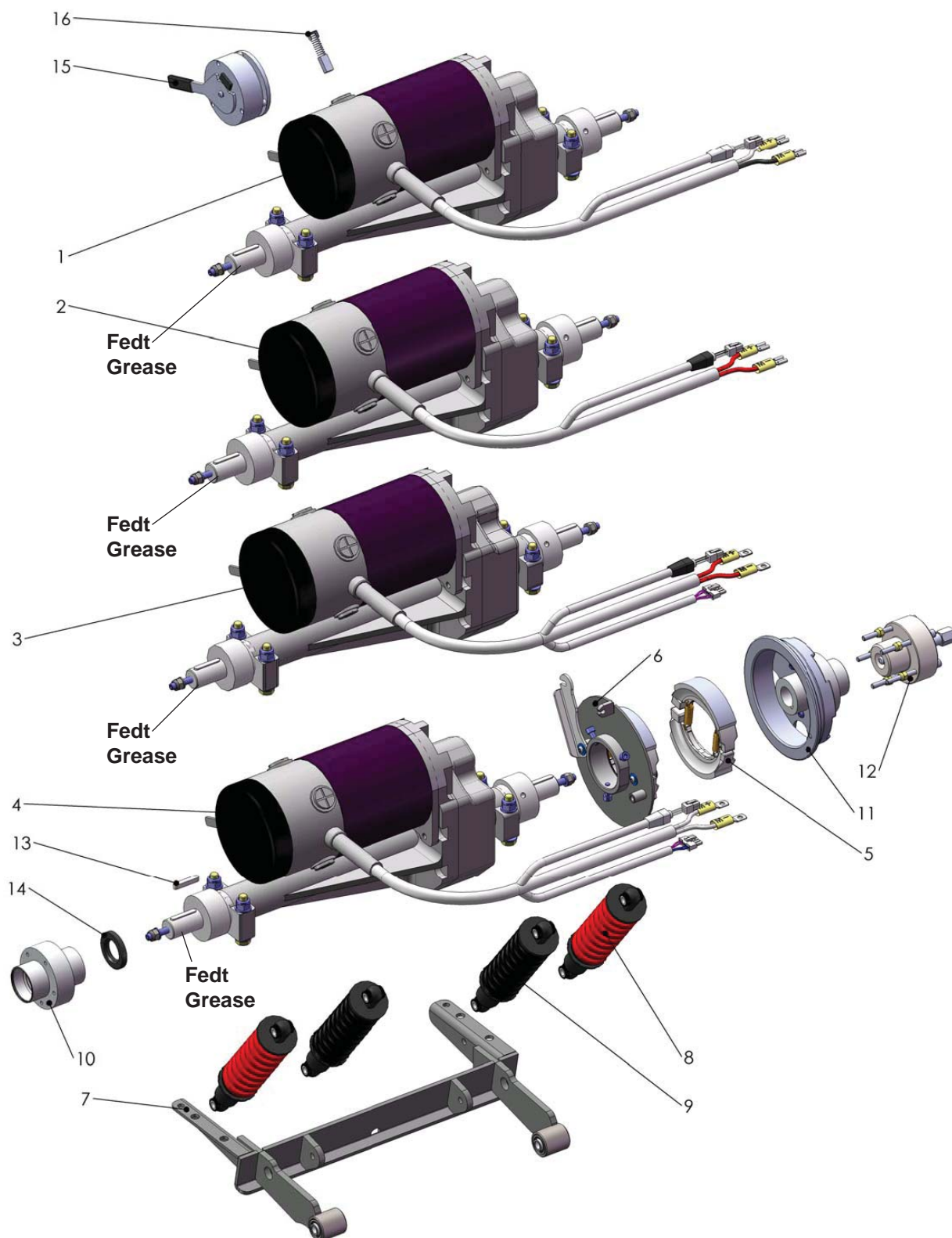
Stel og sæderør.

Chassis frame and seat column.

Pos.	Del/part no.	Benævnelse	Part name	Antal/ quant.
1	M-127-02-003	Sædestolpe komplet	Seat column complete	1
2	M127-02-006	Friktionsstykker for sædestolpe, komplet sæt	Friction pieces of the seat post, complete set	1
3	M-127--03-010	Forkofanger 3W, komplet	Front bumper 3W, complete	1
4	M-127-1-025	Gummiprofil 3 x 25 x 8 x 440	Rubber list 3 x 25 x 8 x 440	1
5	M-127-2-041	Bundramme 3W	Chassis frame 3W	1
6	M-127-2-050	C-profil	C-profile	1
7	M-127-2-090	Sædestolpe topdel med bøsning, B, efter 14.08.2009	Seat column toppart with bushing, B, after 14.08.2009	1
8	M-127-2-093	Sædestolpe topdel med bøsning, A, før 14.08.2009	Seat column toppart with bushing, A, before 14.08.2009	1
9	SR-04801	Positionsbolt	Position tap	1
10	SR-04833	Positionsbolt med lås	Position tap with lock	1

Mini Crosser M1-3W

Transaksler Transaxles



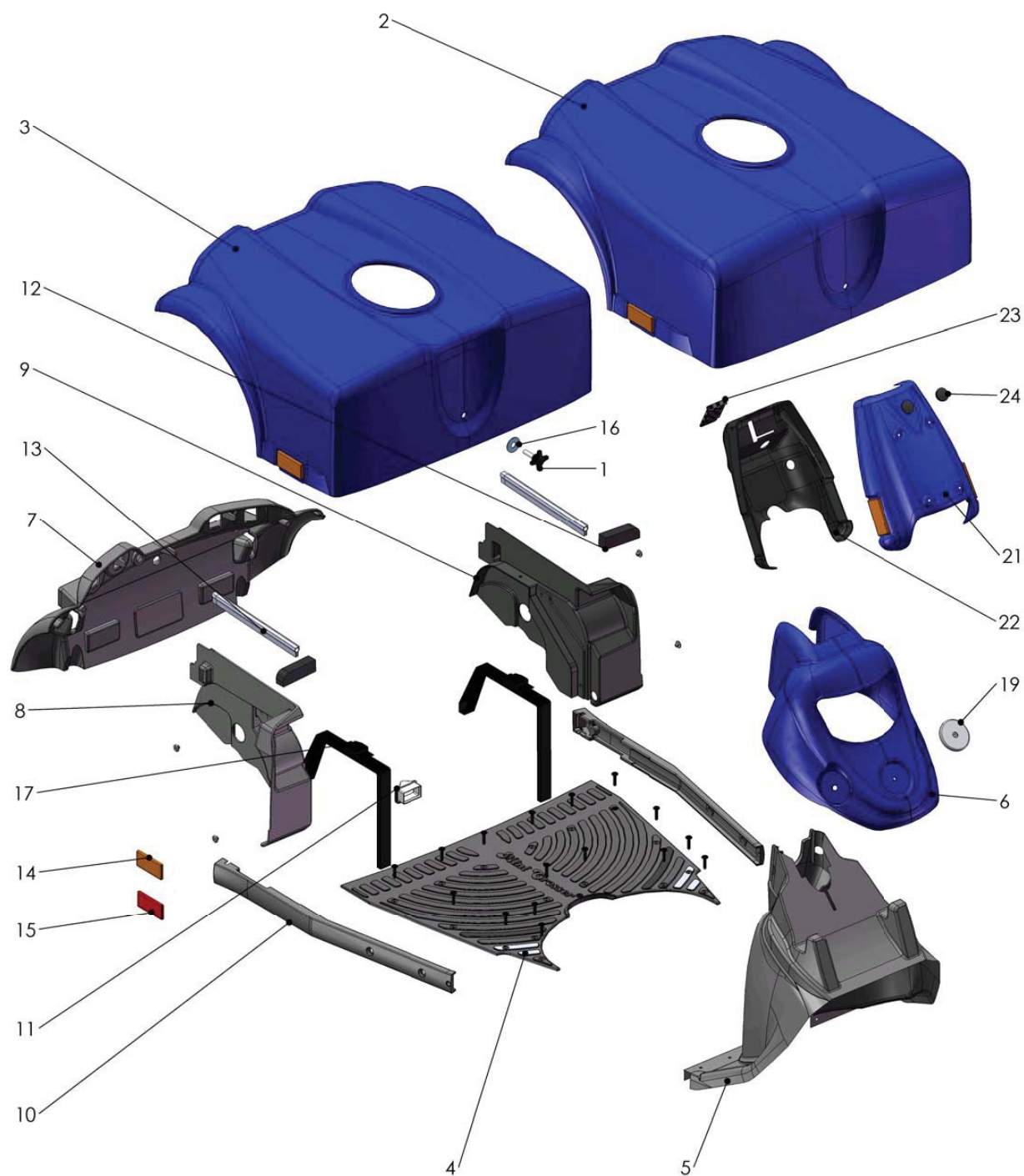
Mini Crosser M1-3W

Transaksler Transaxles

Pos.	Del/part no.	Benævnelse	Part name	Antal/ quant.
1	M-127-02-007	Transaksel 10 km, komplet m/motor (Solo styring)	Transaxle assembly 10 km/h (Solo Controller)	1
2	M-127-02-008	Transaksel 15 km, komplet m/motor (Solo styring)	Transaxle assembly 15 km/h (Solo Controller)	1
3	M-127-02-017	Transaksel 10 km. Komplet, thermo switch. (S-180 styring)	Transaxle 10 km/h. complete, thermo switch. (S-180 Controller)	1
4	M-127-02-018	Transaksel 15 km. Komplet, thermo switch. (S-180 styring)	Transaxle 15 km/h. complete, thermo switch. (S-180 Controller)	1
5	M-127-04-011	Bremsebakker	Brake pads	1
6	M-127-04-012	Bremsebæreplade, komplet	Brake backing plate, complete	1
7	M-127-2-045	Bagsvinger	Rear suspension	1
8	M-127-4-008	Støddæmper bag tung bruger	Suspension rear Heavy duty	2
9	M-127-4-009	Støddæmper bag	Suspension rear	2
10	M-127-4-026	Hjulflange ø25 til bremse	Wheel flange ø 25 for brake	1
11	M-127-4-029	Flange med bremsetromle Alu ø25	Flange with brake drum Alu ø25	1
12	M-127-6-015	Aftrækker for bremsenav	Hub Puller for brake drum	1
13	SR-01017	6 x 6 x 36 Feder, DIN 6885 form A	6 x 6 x 36 Parallel key	2
14	SR-04173	Pakdåse (25x47x7)	Sealing Ring (25x47x7)	1
15	SR-04753	MOTORBREMSE, KOMPLET Ø-TRANS	Engine brake, complete	1
16	SR-05072	KUL FOR MOTOR MC-TRANSAKSEL	Motor brush for MC-transaxle	1

Mini Crosser M1-3W

Skærme - blå metallic
 Covers - blue metallic



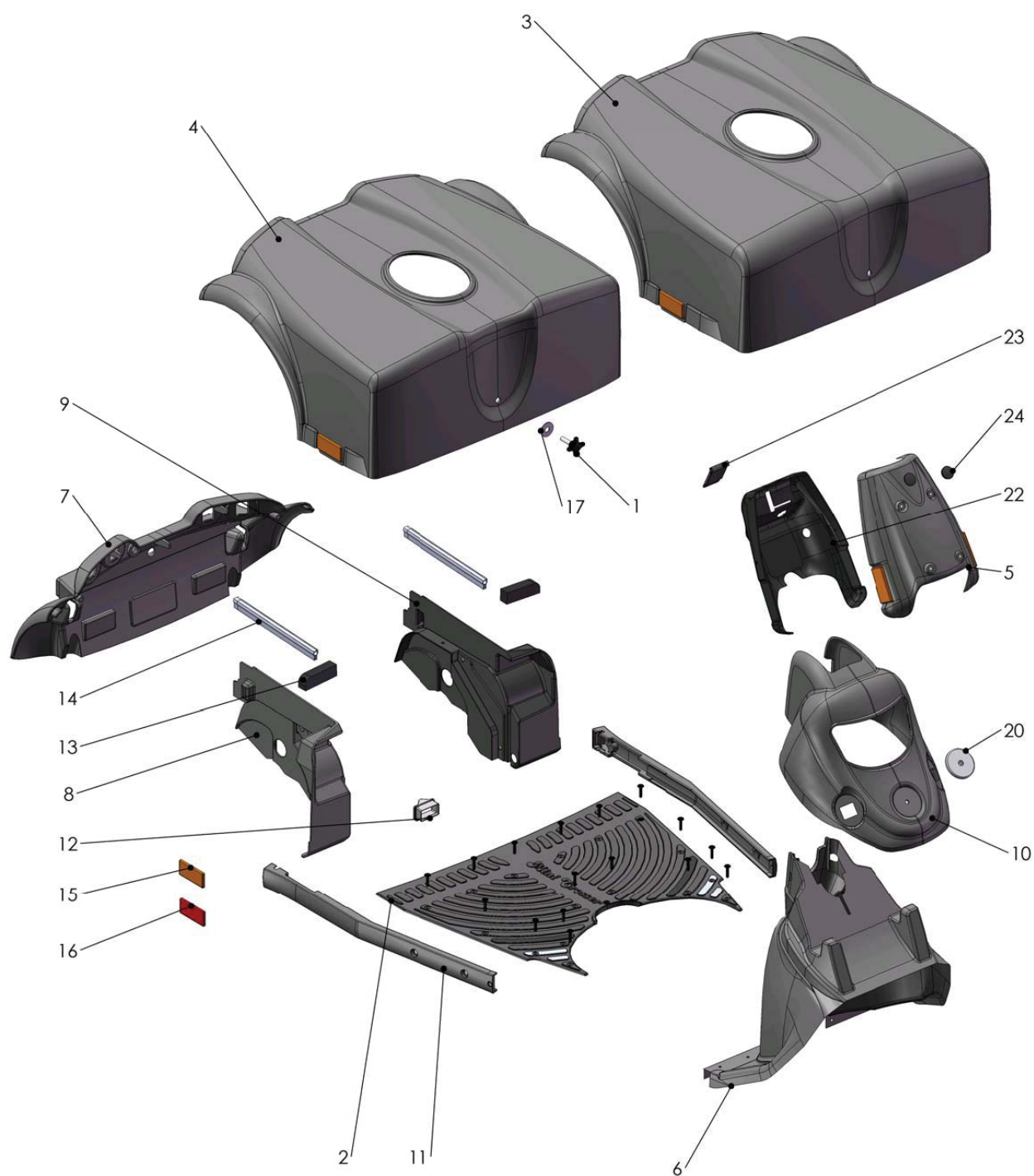
Mini Crosser M1-3W

Skærme - blå metallic Covers - blue metallic

Pos.	Del/part no.	Benævnelse	Part name	Antal/ quant.
1	CR-00067	Håndgreb 83Ø40 8x40/30	Threaded knop 8x40/30	1
2	M-127-01-003	Batteriskærm lang, komplet. (Blue metallic)	Battery cover long, complete. (Blue metallic)	1
3	M-127-01-004	Batteriskærm kort, komplet. (Blue metallic)	Battery cover short, complete. (Blue metallic)	1
4	M-127-01-021	Fodmåtte med blindnitter, 3W	Foot mat with blind rivets, 3W	1
5	M-127-1-001	Fodpladekåbe 3w	Footplate cover 3w	1
6	M-127-1-002	Lygtekåbe 3W (Blue metallic)	Frontlight cover 3W	1
7	M-127-1-007	Kåbe bagende	Cover rearend	1
8	M-127-1-011	Inderskærm højre bag	Mudguard cover rear right	1
9	M-127-1-012	Inderskærm venstre bag	Mudguard cover rear left	1
10	M-127-2-047	Sidebumper 3/4w	Bumper 3/4w	2
11	M-127-2-089	Gummiemne centerrør	Rubberpart for centertube	1
12	M-127-3-025	Dafacell 25x20x80 med klæb	Dafacell 25x20x80 with adhesive	2
13	M-127-3-028	Gummiprofil med topvulst, EPDM, 3-5 mm	Rubber profile EPDM, 3-5 mm	2
14	SR-00090	Refleks orange	Reflector orange	1
15	SR-00594	Refleks rød	Reflector red	1
16	SR-01085	Polyamid skive Ø8 - Ø24 - 2	Polyamid washer Ø8 - Ø24 - 2	1
17	SR-03396	Batterirem	Battery band	2
18	SR-03981	Ø5 x 25 Blindnitte RH polyamid 6.6	Ø5 x 25 Blind rivets polyamid 6.6	1
19	SR-04798	Refleks Ø60 Hella 8RA 002 014-041	Refleks Ø60 Hella 8RA 002 014-041	1
20	SR-05196	4,8 x 12,7 Blindnitte med stor flange, Alu.	4,8 x 12,7 Blind rivet with large flange, alu	4
21	T-127-01-010	Kåbe for styrestolpe med refleks (Blue metallic)	Cover steering column front	1
22	T-127-1-012	Skærm f. styrestolpe bag	Cover steering column behind	1
23	T-127-1-016	Afdækning ladestik gummi profil	Cover charge plug rubber profile	1
24	T-127-3-106	Prop gummi for hul ø19	Plug rubber for hole ø19	1

Mini Crosser M1-3W

Skærme - grå metallic
 Covers - grey metallic



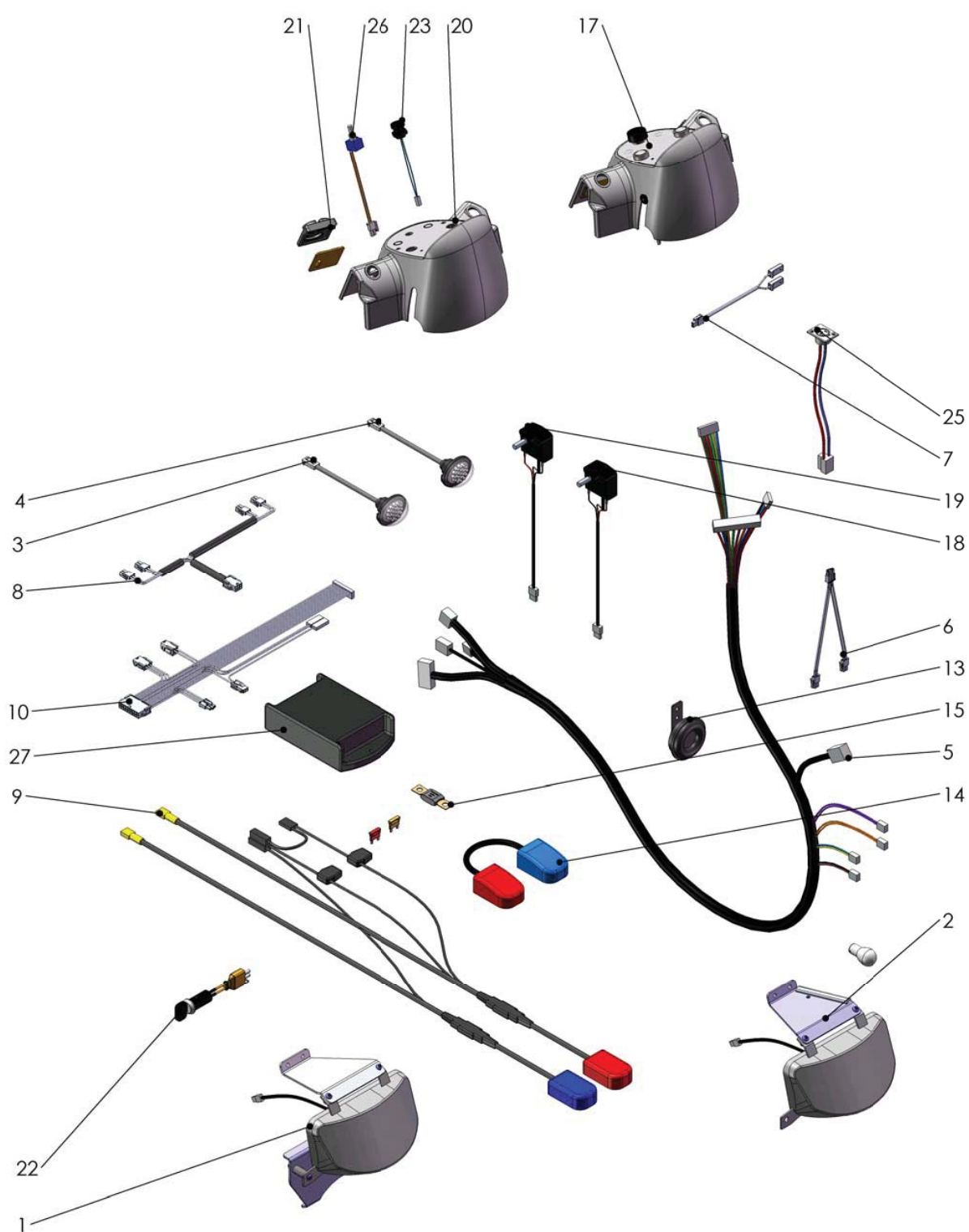
Mini Crosser M1-3W

Skærme - grå metallic Covers - grey metallic

Pos.	Del/part no.	Benævnelse	Part name	Antal/ quant.
1	CR-00067	Håndgreb M8x20 - Ø40	Threaded knop M8x20 Ø40	1
2	M-127-01-021	Fodmåtte med blindnitter, 3W	Foot mat with blind rivets, 3W	1
3	M-127-01-023	Batterikåbe lang model (Grey metallic)	Battery cover long, complete. (Grey metallic)	1
4	M-127-01-024	Batterikåbe kort model (Grey metallic)	Battery cover short, complete. (Grey metallic)	1
5	M-127-01-030	Skærm for styrestolpe, forand (Grey metallic)	Cover steering column front (Grey metallic)	1
6	M-127-1-001	Fodpladekåbe 3w	Footplate cover 3w	1
7	M-127-1-007	Kåbe bagende	Cover rearend	1
8	M-127-1-011	Inderskærm højre bag	Mudguard cover rear right	1
9	M-127-1-012	Inderskærm venstre bag	Mudguard cover rear left	1
10	M-127-1-022	Lygtekåbe 3W (Grey metallic)	Frontlight cover 3W (Grey metallic)	1
11	M-127-2-047	Sidebumper 3/4w	Bumper 3/4w	2
12	M-127-2-089	Gummiemne centerrør	Rubberpart for centertube	1
13	M-127-3-025	Dafacell 25x20x80 med klæb	Dafacell 25x20x80 with adhesive	2
14	M-127-3-028	Gummiprofil med topvulst, EPDM, 3-5 mm	Rubber profile EPDM, 3-5 mm	2
15	SR-00090	Refleks orange	Reflector orange	1
16	SR-00594	Reflektor rød	Reflector red	1
17	SR-01085	Polyamid skive Ø8 - Ø24 - 2	Polyamid washer Ø8 - Ø24 - 2	1
18	SR-03396	Batterirem	Battery band	2
19	SR-03981	Ø5 x 25 Blindnitte RH polyamid 6.6	Ø5 x 25 Blind rivets polyamid 6.6	1
20	SR-04798	Refleks Ø60 Hella 8RA 002 014-041	Refleks Ø60 Hella 8RA 002 014-041	1
21	SR-05196	4,8 x 12,7 Blindnitte med stor flange, Alu	4,8 x 12,7 Blind rivet with large flange, alu	4
22	T-127-1-012	Skærm f. styrestolpe bag	Cover steering column behind	1
23	T-127-1-016	Afdækning ladestik gummi profil	Cover charge plug rubber profile	1
24	T-127-3-106	Prop gummi for hul ø19	Plug rubber for hole ø19	1

Mini Crosser M1-3W

EL-dele for Solo styring
Electric parts for Solo Controller



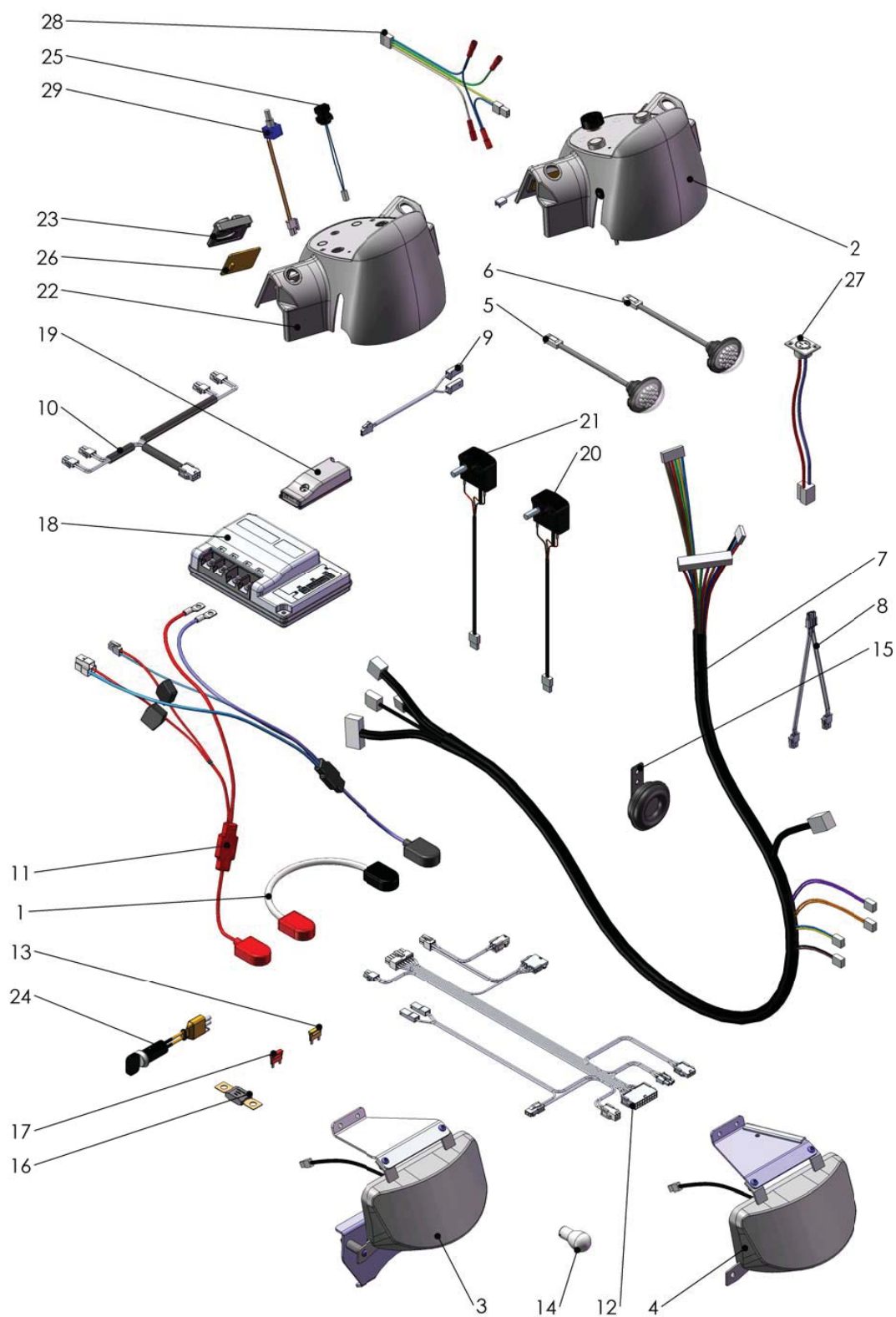
Mini Crosser M1-3W

EL-dele for Solo styring Electric parts for Solo Controller

Pos.	Del/part no.	Benævnelse	Part name	Antal/ quant.
1	M-127-03-022	Forlygte. komplet 4w	Headlamp. complete 4w	1
2	M-127-03-024	Forlygte. komplet 3w	Headlamp. complete 3w	1
3	M-127-5-015	Rød diode baglygte, klar linse	Read LED rear light, Clear lens	1
4	M-127-5-019	Gul diode blinklygte, klar linse	Yellow LED light, Clear lens	1
5	M-127-5-040	Hovedkabel, Solo styring	Cable, Main for Solo controler	1
6	M-127-5-041	Kabel, blinklys for	Cabel, flashing lights front	1
7	M-127-5-042	Kabel, for reduceret hastighed	Cable, for reduced speed	1
8	M-127-5-045	Kabel, baglys	Cable, rear light	1
9	M-127-5-046	Kabel Batteri-styring, M-model	Cable Battery-controller, M-model	1
10	M-127-5-047	Kabel, for styring	Cable, for controler	1
11	SR-00066	Sikring 5A	Fuse 5A	1
12	SR-00070	Pære 5W	Lamp 5W	1
13	SR-00232	Horn, signal til T-modeller (version 2)	Horn, signal (version 2)	1
14	SR-00963	Mellemkabel. batteri	Battery connecting cabel	1
15	SR-00978	Littelfuse MEGA 100A	Littelfuse MEGA 100A	1
16	SR-03969	Sikring 10A	Fuse 10A	1
17	T-127-03-016	Brugerpanel komplet	User panel cover compl	1
18	T-127-05-003	Potentiometer, CURTIS komplet, højre	Potentiometer, CURTIS complete, right	1
19	T-127-05-004	Potentiometer, CURTIS komplet, venstre	Potentiometer, CURTIS complete, left	1
20	T-127-1-008	Brugerpanel indækning	User panel cover	1
21	T-127-3-010	Silikonemåtte blink, horn	Silicone mat winker lamp,horn	1
22	T-127-3-090	Nøgle + nøgleafbryder	Key + switch	1
23	T-127-5-006	Lys / katastrofe kontakt T	Light / hassard	1
24	T-127-5-008	Print, blinklys og horn med kabel	Print, Winker and horn with cable	1
25	T-127-5-014	Ladestik, incl kabel/stik T	Chargeplug with cabel T	1
26	T-127-5-032	POT. MED LEDNING, 50K	Speed limiting, 50K	1
27	T-127-5-071	STYRING. 130T + 4W - P&G	CONTROLLER. 130T + 4W - P&G	1

Mini Crosser M1-3W

EI-dele for S-180 styring Electric parts for S-180 Controller



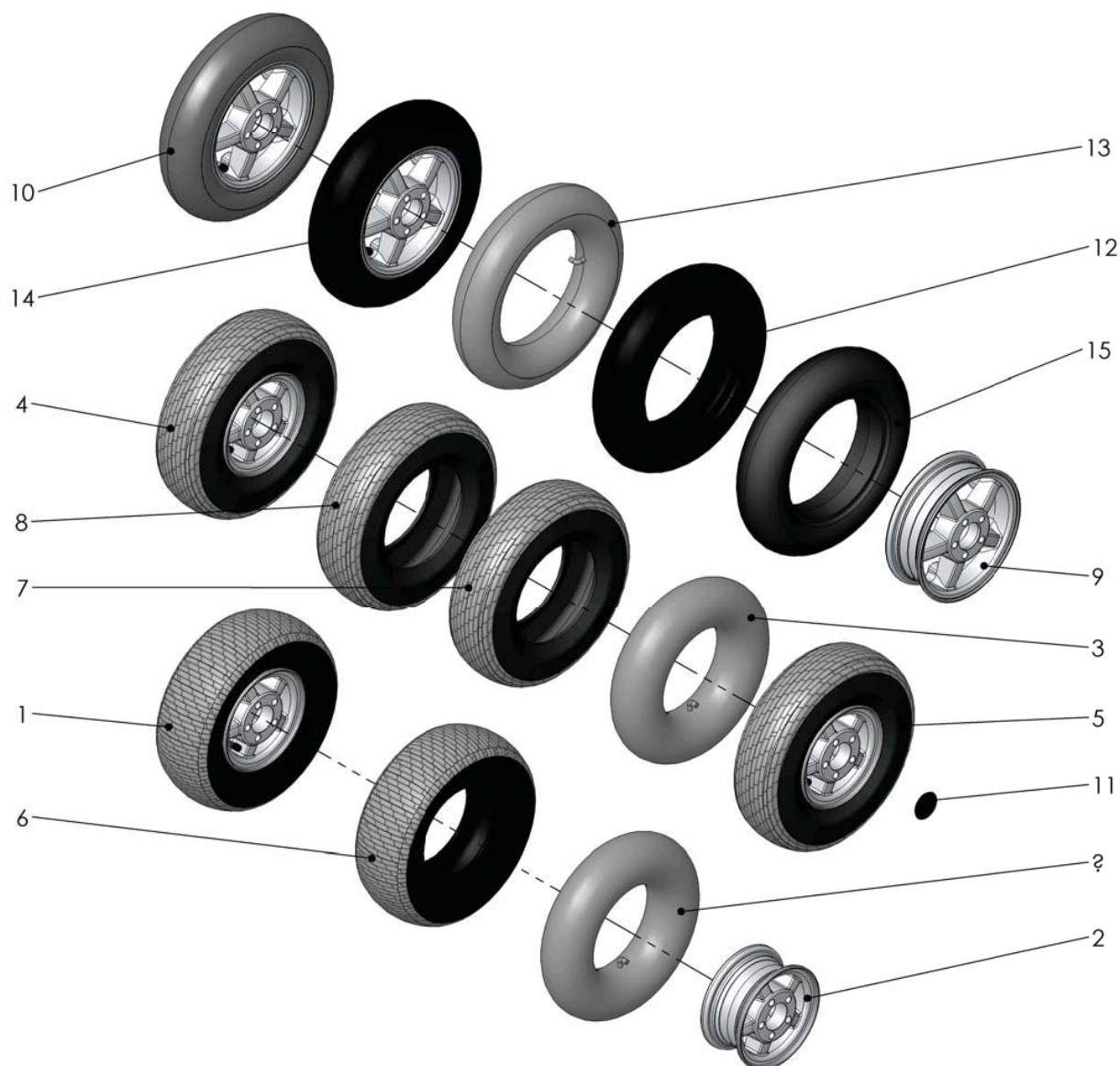
Mini Crosser M1-3W

El-dele for S-180 styring Electric parts for S-180 Controller

Pos.	Del/part no.	Benævnelse	Part name	Antal/ quant.
1	E-130-5-007	Mellemkabel, batteri	Cabel, between battery	1
2	M-127-03-006	Brugerpanel komplet	User panel cover compl	1
3	M-127-03-022	Forlygte. komplet 4w	Headlamp. complete 4w	1
4	M-127-03-024	Forlygte. komplet 3w	Headlamp. complete 3w	1
5	M-127-5-015	Rød diode baglygte, klar linse	Read LED rear light, Clear lens	1
6	M-127-5-019	Gul diode blinklygte, klar linse	Yellow LED light, Clear lens	1
7	M-127-5-040	Hovedkabel, Solo styring	Cable, Main for Solo controler	1
8	M-127-5-041	Kabel, blinklys for	Cabel, flashing lights front	1
9	M-127-5-042	Kabel, for reduceret hastighed	Cable, for reduced speed	1
10	M-127-5-045	Kabel, baglys	Cable, rear light	1
11	M-127-5-049	Kabel batteri - styring S-180	Cable battery - Controller S-180	1
12	M-127-5-056	Kabel for styring S-180	Cable for controller S-180	1
13	SR-00066	Sikring 5A	Fuse 5A	1
14	SR-00070	Pære 5W	Lamp 5W	1
15	SR-00232	Horn, signal til T-modeller (version 2)	Horn, signal (version 2)	1
16	SR-00978	Littelfuse MEGA 100A	Littelfuse MEGA 100A	1
17	SR-03969	Sikring 10A	Fuse 10A	1
18	SR-04803	S-Drive 180A Styring	S-Drive 180A Controller	1
19	SR-05219	Sealing kit for S-180	Sealing kit for S-180	1
20	T-127-05-003	Potentiometer, CURTIS komplet, højre	Potentiometer, CURTIS complete, right	1
21	T-127-05-004	Potentiometer, CURTIS komplet, venstre	Potentiometer, CURTIS complete, left	1
22	T-127-1-008	Brugerpanel indækning	User panel cover	1
23	T-127-3-010	Silikonemåtte blink, horn	Silicone mat winker lamp, horn	1
24	T-127-3-090	Nøgle + nøgleafbryder	Key + switch	1
25	T-127-5-006	Lys / katastrofe kontakt T	Light / hassard	1
26	T-127-5-008	Print, blinklys og horn med kabel	Print, Winker and horn with cable	1
27	T-127-5-014	Ladestik, incl kabel/stik T	Chargeplug with cabel T	1
28	T-127-5-045	Kabel blinklys T	Kabel blinker T	1
29	T-127-5-109	Pot. med ledning, 100K	Speed limiting, 100K	1

Mini Crosser M1-3W

M hjul og dæk M Wheels and Tires



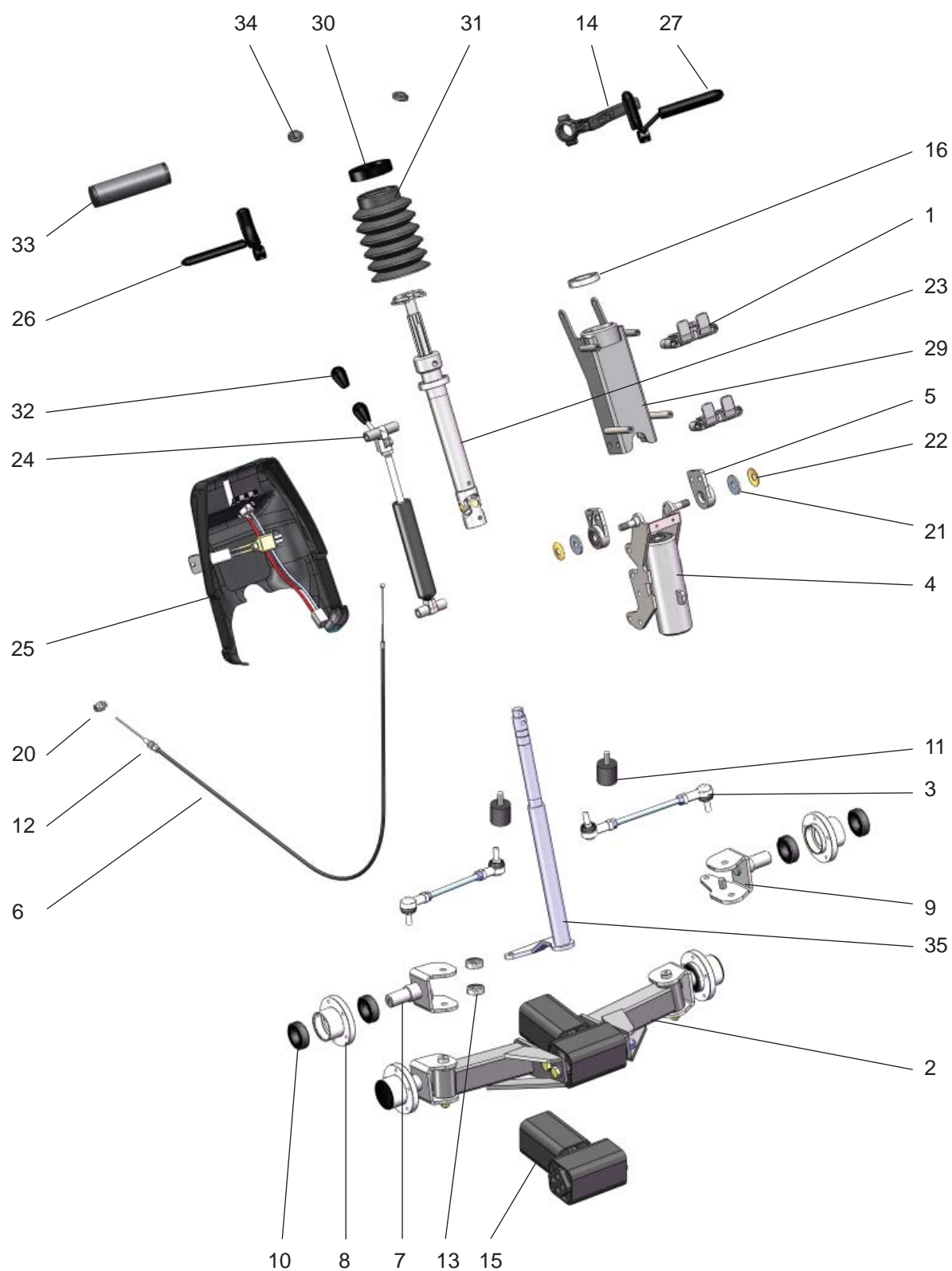
Mini Crosser M1-3W

M hjul og dæk M Wheels and Tires

Pos.	Del/part no.	Benævnelse	Part name	Antal/ quant.
1	E-115-03-065	Hjul Golf, ekstra bred 13x5.00-6	Wheel ass. ekstra wide, 13x5.00-6	1
2	E-115-03-066	Hjulfælg komplet 6"	Wheel rim complete 6"	1
3	E-115-3-003	Slange MC 6" vinkel ventil 4.10/3,5-6	Tube for tyre, 4.10/3,5-6	2
4	M-127-3-165	Hjul, Norge, 13x5.00-6" komplet	Wheel, Norway, 13x5.00-6" complete	1
5	M-127-3-165P	Hjul, Norge, 13x5.00-6", m/pigge	Wheel, Norway, 13x5.00-6" with spikes	1
6	S4-0011	Dæk til Golfhjul, ekstra bred	Tires for golf wheels, ekstra wide	1
7	S4-0060	Dæk Norge 13x5.00-6"	Tyre Norway 13x5.00-6"	1
8	S4-0061	Dæk Norge 13x5.00-6" m/pigge	Tyre Norway 13x5.00-6" with spikes	1
9	T-127-03-056	Fælg, Aluminium 8"	Rim, aluminium 8"	1
10	T-127-03-105	Hjul komplet 125T, 130T, 140T grå/stk	Wheel complete, 125T, 130T, 140T grey	1
11	T-127-3-004	Kapsel for fælg alu 8"	Capsule for Rim alu 8"	1
12	T-127-3-005	Dæk 3.00-8 MC	Tyre 3.00-8"	1
13	T-127-3-006	Slange for dæk 3.00-8	Tube for tyre 3.00-8	1
14	T-127-3-065	Hjul komplet med fælg, dæk og slange (sort)	Wheel ass. 3.00-8 alu (black)	1
15	T-127-3-126	Dæk 3.00-8 punkterfri, PU (sort)	Tyre 3.00-8 solid PU (black)	1

Mini Crosser M1-4W

Styrestolpe komplet Steering column complete



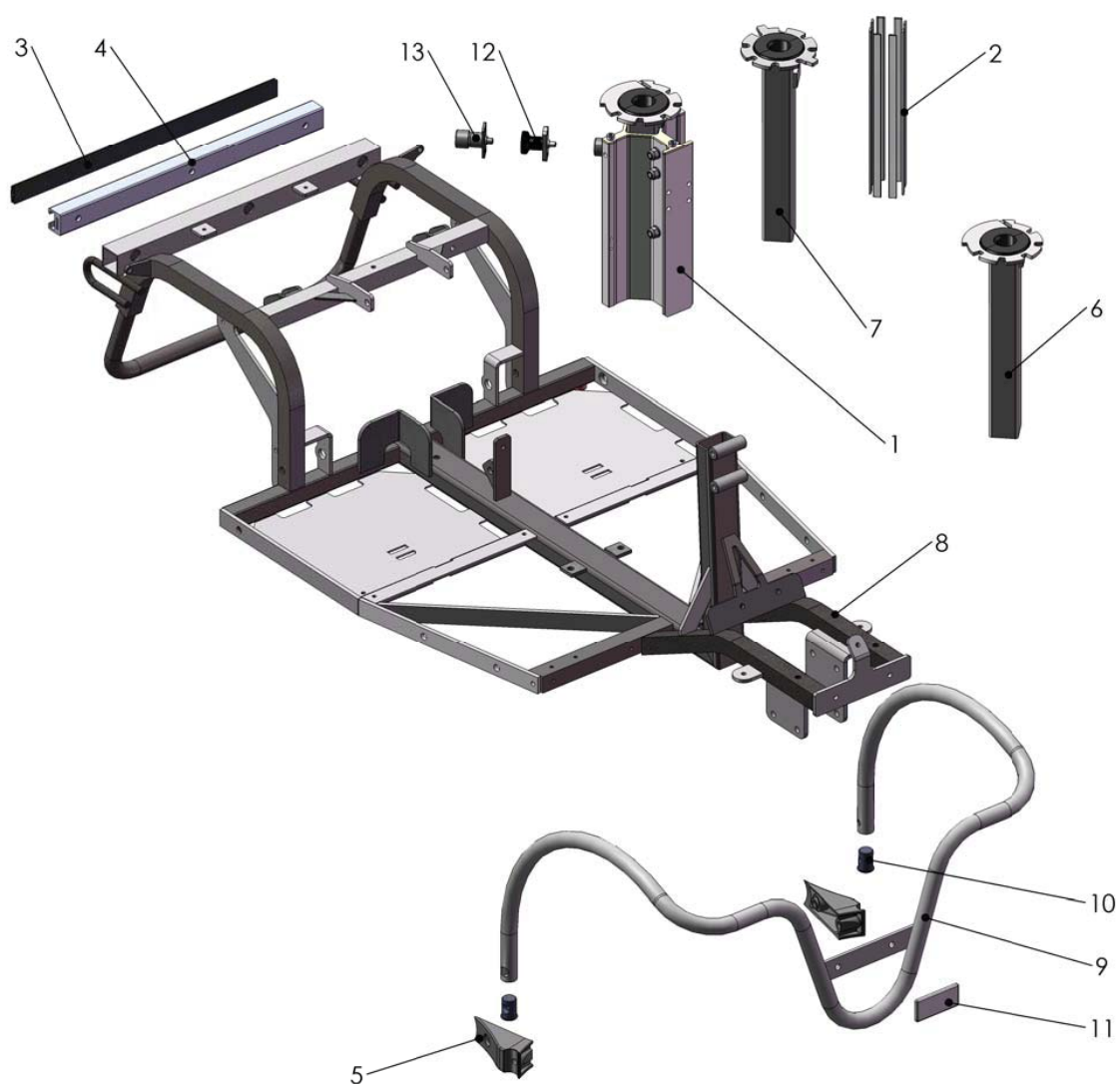
Mini Crosser M1-4W

Styrestolpe komplet Steering column complete

Pos.	Del/part no.	Benævnelse	Part name	Antal/ quant.
1	M-127-03-025	Holder for kurv, komplet sæt	Holder for basket, complete set	1
2	M-127-03-510	Forbro med affjedring, komplet (4W)	Caster beam with suspension (4W)	1
3	M-127-03-514	Styrestang, 4W	Steering rod, 4W	2
4	M-127-03-011	Kronrør komplet	Head tube complete	1
5	M-127-3-026	Beslag styrestolpe med leje, komplet	Bracket with bearing for the steering bar complete	2
6	M-127-3-093	Bremsekabel 2100mm (3w/4w)	Brake cable 2100mm (3w/4w)	1
7	M-127-3-500	Styrespindel, højre	Steering spindle right	1
8	M-127-3-504	Nav forhjul (4w)	Hub front (4w)	2
9	M-127-3-506	Styrespindel, venstre	Steering spindle left	1
10	SR-00095	6004-2RS, leje	6004-2RS, Bearing	4
11	SR-00509	Gummidæmper	Rubber damper	2
12	SR-00851	Justerskrue for bremsekabel inkl. 2 møtiker	Adjusting screw for brake cable including 2 nuts	1
13	SR-01120	6000 - 2RS1, leje	6000 - 2RS1, Bearing	2
14	SR-01497	Håndbremsegreb	Brake hand lever	1
15	SR-01709	Affjedringsenhed 4W front	Suspension unit 4w front	1
16	SR-04246	61906-2RS, leje	61906-2RS, Bearing	1
20	SR-04802	Kabel lås	Cable lock	1
21	SR-05193	Polyamid skive Ø10,5 x Ø30 x 2,5	Polyamid washer Ø10,5 x Ø30 x 2,5	2
22	SR-05194	10,2x28x0,8 Tallerkenfjederskive	10,2x28x0,8 Disc spring	2
23	T-127-02-014	Styrestolpe, kardanled, komplet	Steering Post, kardan part, complete	1
24	T-127-03-012	Gasfjeder for styrestolpe	Gasspring for steering column	1
25	T-127-03-017	Montering ladestik og tændingsnøgle	Mounting charger plug and key switch	1
26	T-127-03-099	Gashåndtag universal højre, komplet	Gashandle universal right, complete	1
27	T-127-03-100	Gashåndtag universal venstre, komplet	Gashandle universal left, complete	1
29	T-127-3-063	Styrstamme	Steering column	1
30	T-127-3-070	Ring for gummibælg	Ring for rubber bellow	1
31	T-127-3-071	Gummibælg	Rubber bellow	1
32	T-127-3-074	Knop	Handle	1
33	T-127-3-077	Styrhåndtag	Steering handle	1
34	T-127-3-081	Prop for spejlmonteringshul	Plug for mirror mounting hole	2
35	T-127-3-504	Styreaksel 4W	Steering column 4-wheel	1

Mini Crosser M1-4W

Stel og sæderør.
Chassis frame and seat column.



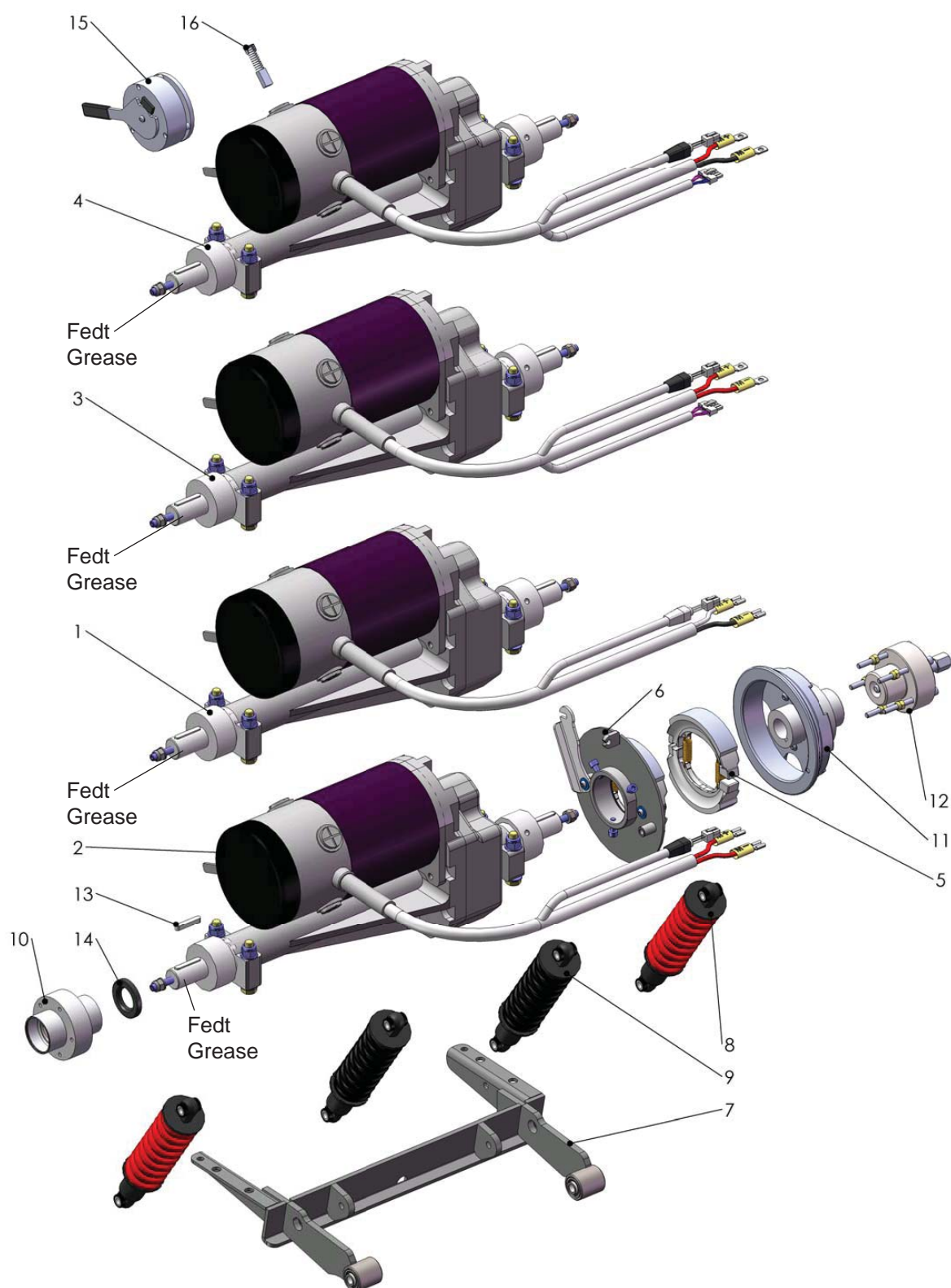
Mini Crosser M1-4W

Stel og sæderør. Chassis frame and seat column.

Pos.	Del/part no.	Benævnelse	Part name	Antal/ quant.
1	M-127-02-003	Sædestolpe komplet	Seat column complete	1
2	M127-02-006	Friktionsstykker for sædestolpe, komplet sæt	Friction pieces of the seat post, complete set	1
3	M-127-1-025	Gummiprofil 3 x 25 x 8 x 440	Rubber list 3 x 25 x 8 x 440	1
4	M-127-2-050	C-profil	C-profile	1
5	M-127-2-056	Adapter for kofanger 4W	Adapter for front bumper 4W	2
6	M-127-2-090	Sædestolpe topdel med bøsning, B, efter 14.08.2009	Seat column toppart with bushing, B, after 14.08.2009	1
7	M-127-2-093	Sædestolpe topdel med bøsning, A, før 14.08.2009	Seat column toppart with bushing, A, before 14.08.2009	1
8	M-127-2-541	Bundramme 4W	Chassis fram 4W	1
9	M-127-3-525	Forkofanger 4W	Front bumper 4W	1
10	M-127-3-528	Bøsning for kofanger 4W	Bushing for front bumper	2
11	SR-00077	Refleks, hvid	Reflector, white	1
12	SR-04801	Positionsbolt	Position tap	1
13	SR-04833	Positionsbolt med lås	Position tap with lock	1

Mini Crosser M1-4W

Transaksler Transaxles



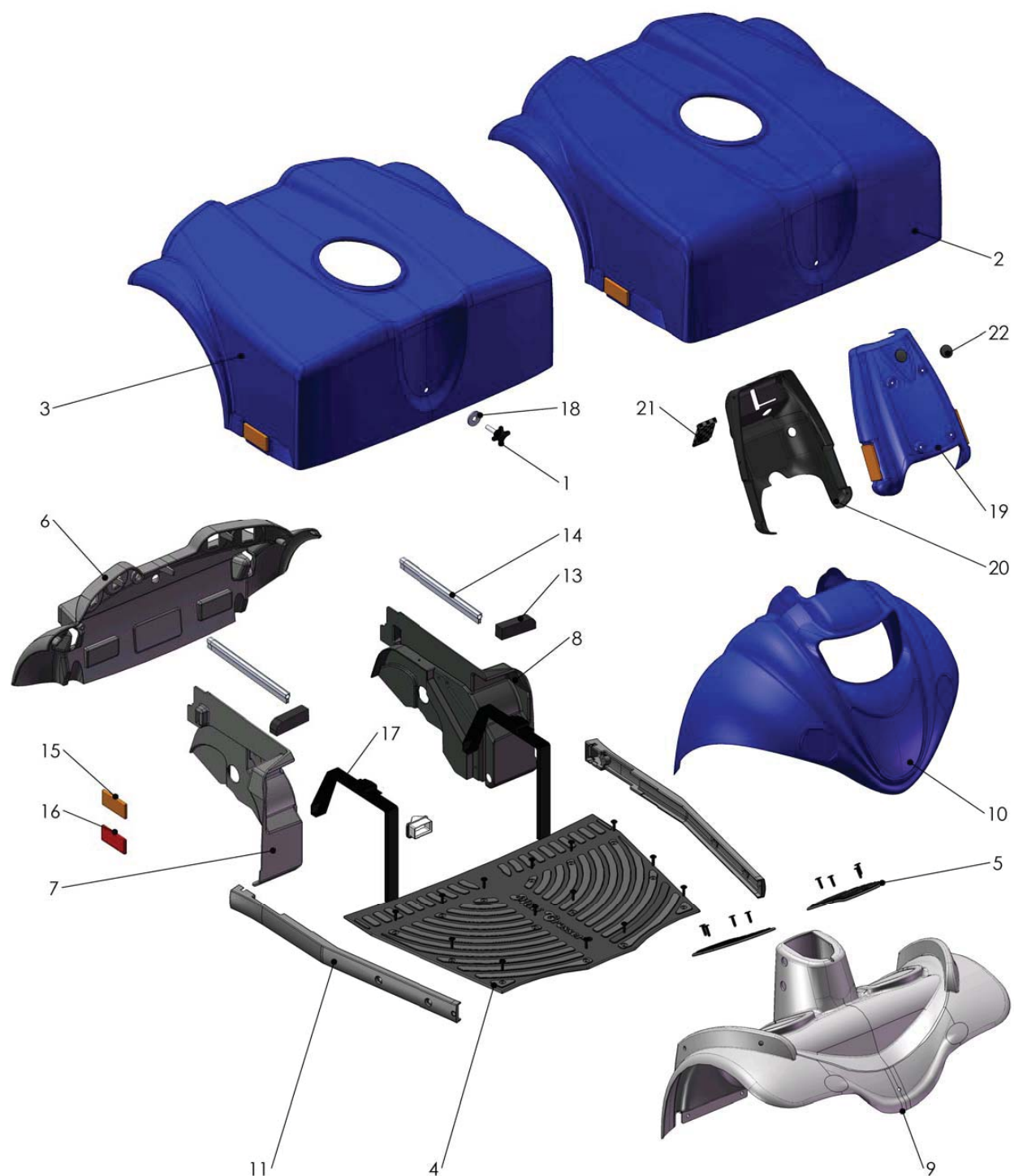
Mini Crosser M1-4W

Transaksler Transaxles

Pos.	Del/part no.	Benævnelse	Part name	Antal/ quant.
1	M-127-02-007	Transaksel 10 km, komplet m/motor (Solo styring)	Transaxle assembly 10 km/h (Solo Controller)	1
2	M-127-02-008	Transaksel 15 km, komplet m/motor (Solo styring)	Transaxle assembly 15 km/h (Solo Controller)	1
3	M-127-02-017	Transaksel 10 km. Komplet, thermo switch. (S-180 styring)	Transaxle 10 km/h. complete, thermo switch. (S-180 Controller)	1
4	M-127-02-018	Transaksel 15 km. Komplet, thermo switch. (S-180 styring)	Transaxle 15 km/h. complete, thermo switch. (S-180 Controller)	1
5	M-127-04-011	Bremsebakker	Brake pads	1
6	M-127-04-012	Bremsebæreplade, komplet	Brake backing plate, complete	1
7	M-127-2-045	Bagsvinger	Rearsuspension	1
8	M-127-4-008	Støddæmper bag tung bruger	Suspension rear Heavy duty	2
9	M-127-4-009	Støddæmper bag	Suspension rear	2
10	M-127-4-026	Hjulflange ø25 til bremse	Wheel flange ø 25 for brake	1
11	M-127-4-029	Flange med bremsetromle Alu ø25	Flange with brake drum Alu ø25	1
12	M-127-6-015	Aftrækker for bremsenav	Hub Puller for brake drum	1
13	SR-01017	6 x 6 x 36 Feder, DIN 6885 form A	6 x 6 x 36 Parallel key	2
14	SR-04173	Pakdåse (25x47x7)	Sealing Ring (25x47x7)	1
15	SR-04753	MOTORBREMSE, KOMPLET Ø-TRANS	Engine brake, complete	1
16	SR-05072	KUL FOR MOTOR MC-TRANSAKSEL	Motor brush for MC-transaxle	1

Mini Crosser M1-4W

Skærme - blå metallic
 Covers - blue metallic



Mini Crosser M1-4W

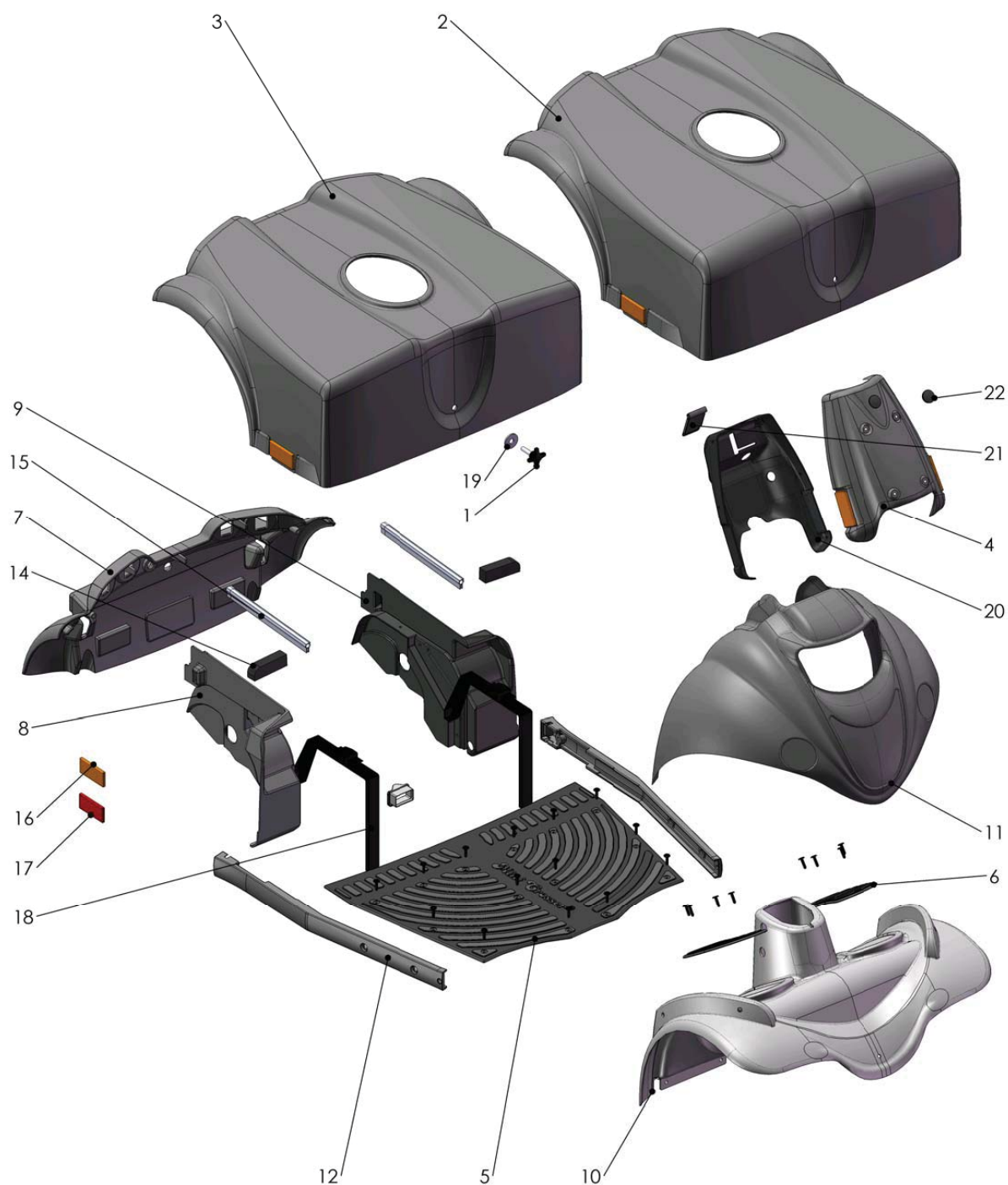
Skærme - blå metallic

Covers - blue metallic

Pos.	Del/part no.	Benævnelse	Part name	Antal/ quant.
1	CR-00067	HÅNDGREB 83Ø40 8x40/30	Threaded knop 8x40/30	1
2	M-127-01-003	Batteriskærm lang, komplet. (Blue metallic)	Battery cover long, complete. (Blue metallic)	1
3	M-127-01-004	Batteriskærm kort, komplet. (Blue metallic)	Battery cover short, complete. (Blue metallic)	1
4	M-127-01-504	Fodmåtte med blindnitter, 4W	Foot mat with blind rivets, 4W	1
5	M-127-01-505	Fodmåtte lille med blindnitter	Foot mat small with rivets, 4W	2
6	M-127-1-007	Kåbe bagende	Cover rearend	1
7	M-127-1-011	Inderskærm højre bag	Mudguard cover rear right	1
8	M-127-1-012	Inderskærm venstre bag	Mudguard cover rear left	1
9	M-127-1-501	Fodplade 4W	Footplate 4W	1
10	M-127-1-502	Forlygteskærm 4W	Front light cover 4W	1
11	M-127-2-047	Sidebumper 3/4W	Bumper 3/4W	2
12	M-127-2-089	Gummiemne centerrør	Rubber part for center tube	1
13	M-127-3-025	Dafacell 25x20x80 med klæb	Dafacell 25x20x80 with adhesive	2
14	M127-3-028	Gummiprofil m/topvulst, EPDM, 3-5 mm	Rubber profile	2
15	SR-00090	Refleks orange	Reflector orange	1
16	SR-00594	Refleks rød	Reflector red	1
17	SR-03396	Batterirem	Battery band	2
18	SR-05193	Polyamid skive Ø10,5 x Ø30 x 2,5	Polyamid washer Ø10,5 x Ø30 x 2,5	1
19	T-127-01-010	Kåbe for styrstolpe med refleks (blue metallic)	Cover steering column front (blue metallic)	1
20	T-127-1-012	Skærm f. styrestolpe bag	Cover steering column behind	1
21	T-127-1-016	Afdækning ladestik gummi profil	Cover charge plug rubber profile	1
22	T-127-3-106	Prop gummi for hul ø19	Plug rubber for hole ø19	1

Mini Crosser M1-4W

Skærme - grå metallic
 Covers - grey metallic



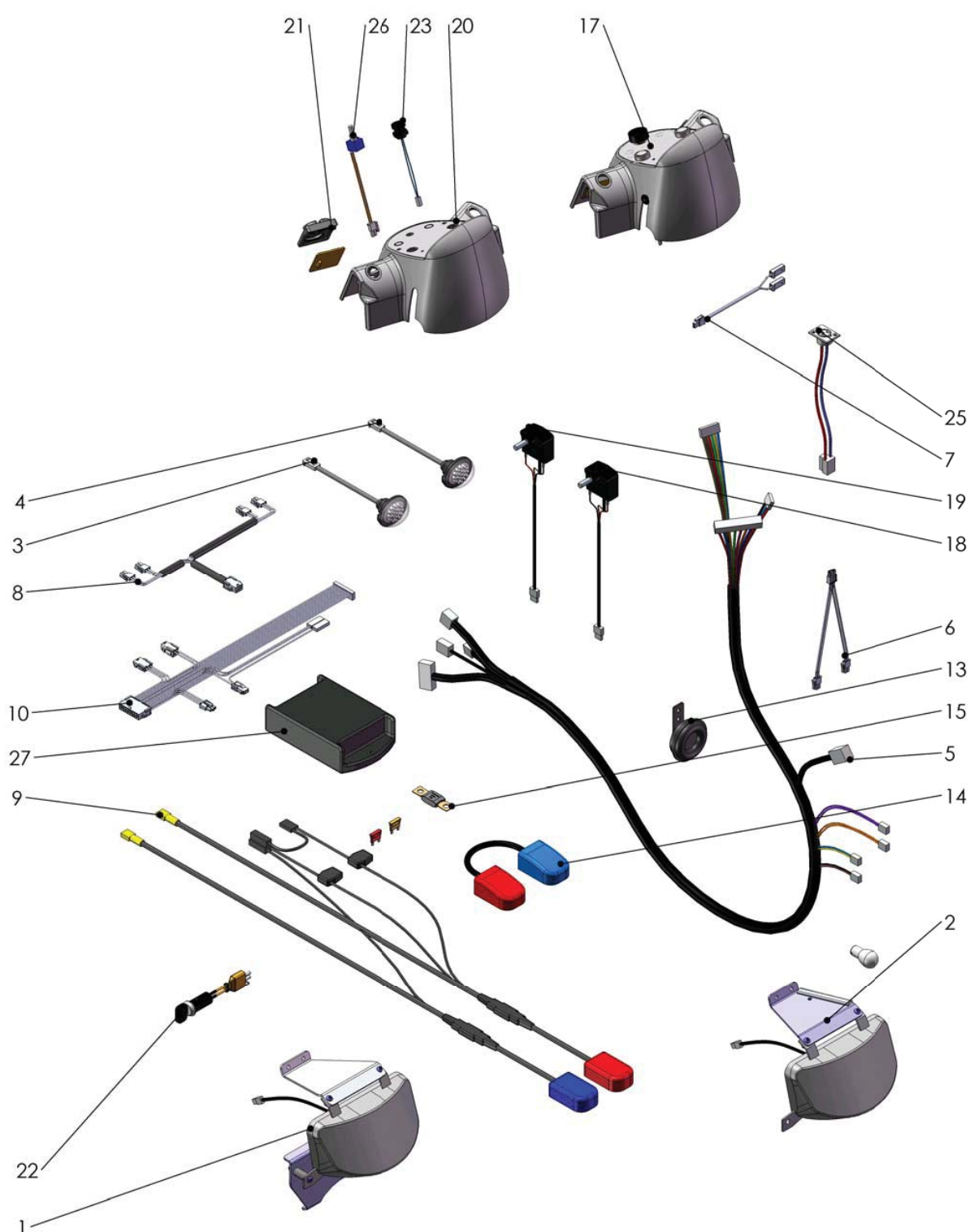
Mini Crosser M1-4W

Skærme - grå metallic Covers - grey metallic

Pos.	Del/part no.	Benævnelse	Part name	Antal/ quant.
1	CR-00067	Håndgreb M8x20 - Ø40	Threaded knop M8x20 Ø40	1
2	M-127-01-023	Batterikåbe lang model (Grey metallic)	Battery cover long, complete. (Grey metallic)	1
3	M-127-01-024	Batterikåbe kort model (Grey metallic)	Battery cover short, complete. (Grey metallic)	1
4	M-127-01-030	Skærm for styrestolpe, forand (Grey metallic)	Cover steering column front (Grey metallic)	1
5	M-127-01-504	Fodmåtte med blindnitter, 4W	Foot mat with rivets, 4W	1
6	M-127-01-505	Fodmåtte lille med blindnitter	Foot mat small with rivets, 4W	2
7	M-127-1-007	Kåbe bagende	Cover rear end	1
8	M-127-1-011	Inderskærm højre bag	Mudguard cover rear right	1
9	M-127-1-012	Inderskærm venstre bag	Mudguard cover rear left	1
10	M-127-1-501	Fodplade 4w	Footplate 4w	1
11	M-127-1-522	Forlygteskærm 4w. (Grey metallic)	Footplate 4w	1
12	M-127-2-047	Sidebumper 3/4w	Bumper 3/4w	2
13	M-127-2-089	Gummiemne centerrør	Rubber part for center tube	1
14	M-127-3-025	Dafacell 25x20x80 med klæb	Dafacell 25x20x80 with adhesive	2
15	M-127-3-028	Gummiprofil med topvulst, EPDM, 3-5 mm	Rubber profile EPDM, 3-5 mm	2
16	SR-00090	Refleks orange	Reflector orange	1
17	SR-00594	Reflektor rød	Reflector red	1
18	SR-03396	Batterirem	Battery band	2
19	SR-05193	Polyamid skive Ø10,5 x Ø30 x 2,5	Polyamid washer Ø10,5 x Ø30 x 2,5	1
20	T-127-1-012	Skærm f. styrestolpe bag	Cover steering column behind	1
21	T-127-1-016	Afdækning ladestik gummi profil	Cover charge plug rubber profile	1
22	T-127-3-106	Prop gummi for hul ø19	Plug rubber for hole ø19	1

Mini Crosser M1-4W

EL-dele for Solo styring Electric parts for Solo Controller



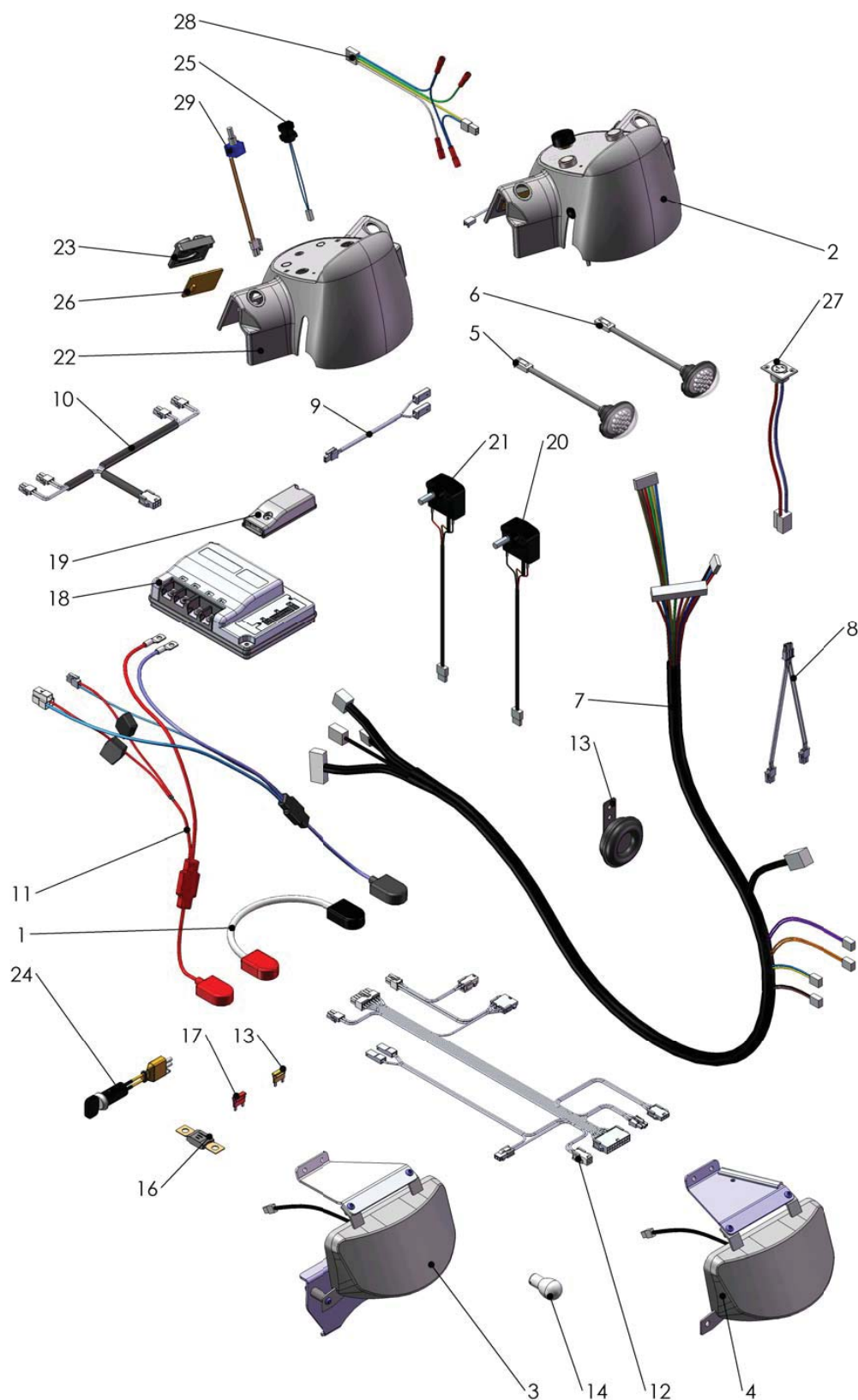
Mini Crosser M1-4W

EL-dele for Solo styring Electric parts for Solo Controller

Pos.	Del/part no.	Benævnelse	Part name	Antal/ quant.
1	M-127-03-022	Forlygte. komplet 4w	Headlamp. complete 4w	1
2	M-127-03-024	Forlygte. komplet 3w	Headlamp. complete 3w	1
3	M-127-5-015	Rød diode baglygte, klar linse	Read LED rear light, Clear lens	1
4	M-127-5-019	Gul diode blinklygte, klar linse	Yellow LED light, Clear lens	1
5	M-127-5-040	Hovedkabel, Solo styring	Cable, Main for Solo controler	1
6	M-127-5-041	Kabel, blinklys for	Cabel, flashing lights front	1
7	M-127-5-042	Kabel, for reduceret hastighed	Cable, for reduced speed	1
8	M-127-5-045	Kabel, baglys	Cable, rear light	1
9	M-127-5-046	Kabel Batteri-styring, M-model	Cable Battery-controller, M-model	1
10	M-127-5-047	Kabel, for styring	Cable, for controler	1
11	SR-00066	Sikring 5A	Fuse 5A	1
12	SR-00070	Pære 5W	Lamp 5W	1
13	SR-00232	Horn, signal til T-modeller (version 2)	Horn, signal (version 2)	1
14	SR-00963	Mellemkabel. batteri	Battery connecting cabel	1
15	SR-00978	Littelfuse MEGA 100A	Littelfuse MEGA 100A	1
16	SR-03969	Sikring 10A	Fuse 10A	1
17	T-127-03-016	Brugerpanel komplet	User panel cover compl	1
18	T-127-05-003	Potentiometer, CURTIS komplet, højre	Potentiometer, CURTIS complete, right	1
19	T-127-05-004	Potentiometer, CURTIS komplet, venstre	Potentiometer, CURTIS complete, left	1
20	T-127-1-008	Brugerpanel indækning	User panel cover	1
21	T-127-3-010	Silikonemåtte blink, horn	Silicone mat winker lamp, horn	1
22	T-127-3-090	Nøgle + nøgleafbryder	Key + switch	1
23	T-127-5-006	Lys / katastrofe kontakt T	Light / hassard	1
24	T-127-5-008	Print, blinklys og horn med kabel	Print, Winker and horn with cable	1
25	T-127-5-014	Ladestik, incl kabel/stik T	Chargeplug with cabel T	1
26	T-127-5-032	POT. MED LEDNING, 50K	Speed limiting, 50K	1
27	T-127-5-071	STYRING. 130T + 4W - P&G	CONTROLLER. 130T + 4W - P&G	1

Mini Crosser M1-4W

El-dele for S-180 styring Electric parts for S-180 Controller



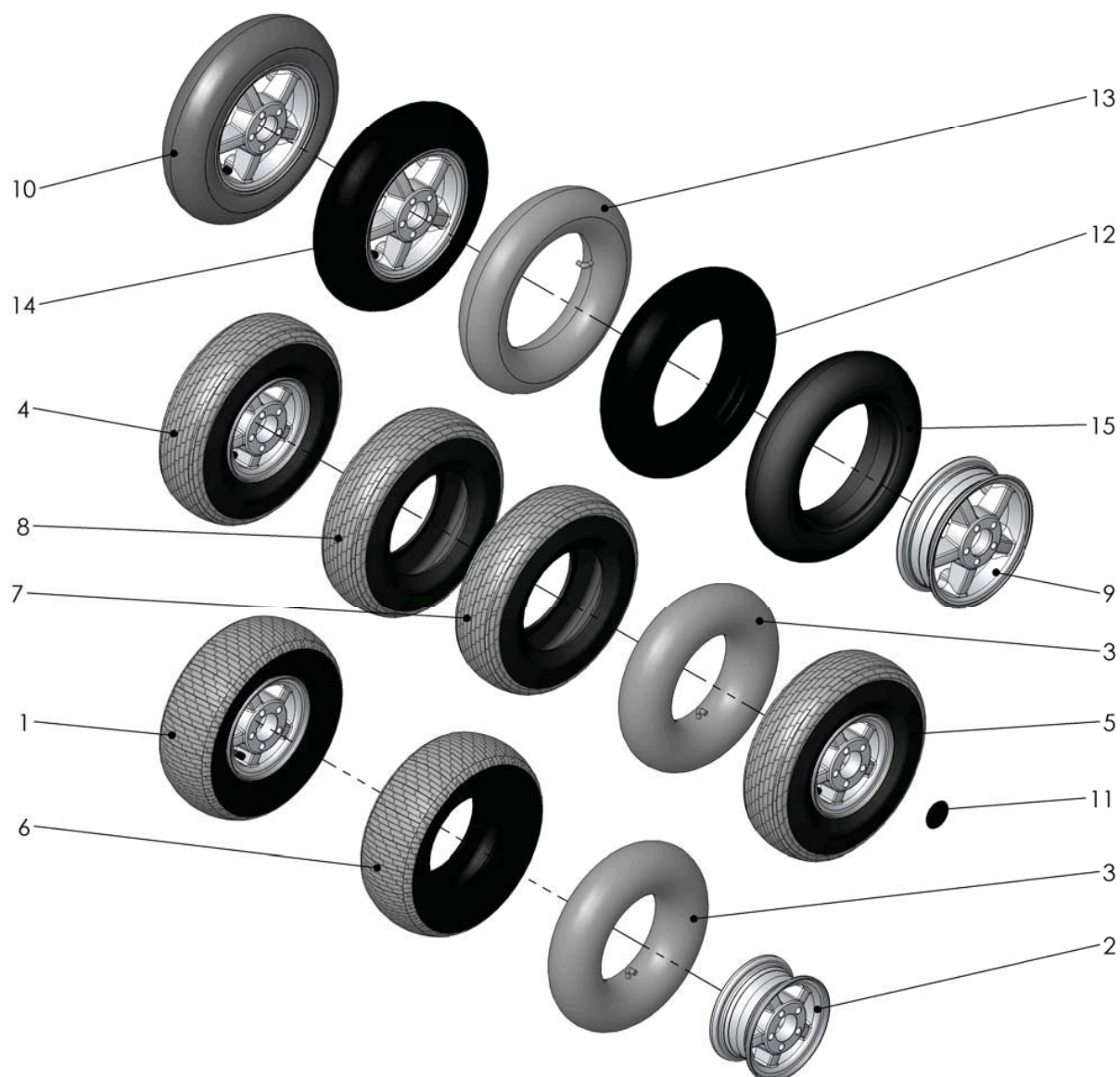
Mini Crosser M1-4W

El-dele for S-180 styring Electric parts for S-180 Controller

Pos.	Del/part no.	Benævnelse	Part name	Antal/ quant.
1	E-130-5-007	Mellemkabel, batteri	Cabel, between battery	1
2	M-127-03-006	Brugerpanel komplet	User panel cover compl	1
3	M-127-03-022	Forlygte. komplet 4w	Headlamp. complete 4w	1
4	M-127-03-024	Forlygte. komplet 3w	Headlamp. complete 3w	1
5	M-127-5-015	Rød diode baglygte, klar linse	Read LED rear light, Clear lens	1
6	M-127-5-019	Gul diode blinklygte, klar linse	Yellow LED light, Clear lens	1
7	M-127-5-040	Hovedkabel, Solo styring	Cable, Main for Solo controler	1
8	M-127-5-041	Kabel, blinklys for	Cabel, flashing lights front	1
9	M-127-5-042	Kabel, for reduceret hastighed	Cable, for reduced speed	1
10	M-127-5-045	Kabel, baglys	Cable, rear light	1
11	M-127-5-049	Kabel batteri - styring S-180	Cable battery - Controller S-180	1
12	M-127-5-056	Kabel for styring S-180	Cable for controller S-180	1
13	SR-00066	Sikring 5A	Fuse 5A	1
14	SR-00070	Pære 5W	Lamp 5W	1
15	SR-00232	Horn, signal til T-modeller (version 2)	Horn, signal (version 2)	1
16	SR-00978	Littelfuse MEGA 100A	Littelfuse MEGA 100A	1
17	SR-03969	Sikring 10A	Fuse 10A	1
18	SR-04803	S-Drive 180A Styring	S-Drive 180A Controller	1
19	SR-05219	Sealing kit for S-180	Sealing kit for S-180	1
20	T-127-05-003	Potentiometer, CURTIS komplet, højre	Potentiometer, CURTIS complete, right	1
21	T-127-05-004	Potentiometer, CURTIS komplet, venstre	Potentiometer, CURTIS complete, left	1
22	T-127-1-008	Brugerpanel indækning	User panel cover	1
23	T-127-3-010	Silikonemåtte blink, horn	Silicone mat winker lamp, horn	1
24	T-127-3-090	Nøgle + nøgleafbryder	Key + switch	1
25	T-127-5-006	Lys / katastrofe kontakt T	Light / hassard	1
26	T-127-5-008	Print, blinklys og horn med kabel	Print, Winker and horn with cable	1
27	T-127-5-014	Ladestik, incl kabel/stik T	Chargeplug with cabel T	1
28	T-127-5-045	Kabel blinklys T	Kabel blinker T	1
29	T-127-5-109	Pot. med ledning, 100K	Speed limiting, 100K	1

Mini Crosser M1-4W

M hjul og dæk M Wheels and Tires



Mini Crosser M1-4W

M hjul og dæk M Wheels and Tires

Pos.	Del/part no.	Benævnelse	Part name	Antal/ quant.
1	E-115-03-065	Hjul Golf, ekstra bred 13x5.00-6	Wheel ass. ekstra wide, 13x5.00-6	1
2	E-115-03-066	Hjulfælg komplet 6"	Wheel rim complete 6"	1
3	E-115-3-003	Slange MC 6" vinkel ventil 4.10/3,5-6	Tube for tyre, 4.10/3,5-6	2
4	M-127-3-165	Hjul, Norge, 13x5.00-6" komplet	Wheel, Norway, 13x5.00-6" complete	1
5	M-127-3-165P	Hjul, Norge, 13x5.00-6", m/pigge	Wheel, Norway, 13x5.00-6" with spikes	1
6	S4-0011	Dæk til Golfhjul, ekstra bred	Tires for golf wheels, ekstra wide	1
7	S4-0060	Dæk Norge 13x5.00-6"	Tyre Norway 13x5.00-6"	1
8	S4-0061	Dæk Norge 13x5.00-6" m/pigge	Tyre Norway 13x5.00-6" with spikes	1
9	T-127-03-056	Fælg, Aluminium 8"	Rim, aluminium 8"	1
10	T-127-03-105	Hjul komplet 125T, 130T, 140T grå/stk	Wheel complete, 125T, 130T, 140T grey	1
11	T-127-3-004	Kapsel for fælg alu 8"	Capsule for Rim alu 8"	1
12	T-127-3-005	Dæk 3.00-8 MC	Tyre 3.00-8"	1
13	T-127-3-006	Slange for dæk 3.00-8	Tube for tyre 3.00-8	1
14	T-127-3-065	Hjul komplet med fælg, dæk og slange (sort)	Wheel ass. 3.00-8 alu (black)	1
15	T-127-3-126	Dæk 3.00-8 punkterfri, PU (sort)	Tyre 3.00-8 solid PU (black)	1



medemagroup